

NORBERTO LUIZ GUARINELLO

T 27181 v.11  
GUARINELLO, NORBERTO LUIZ  
RUINAS DE UMA PAISAGEM: ARQUEOLOGIA DAS CASAS DE  
FAZENDA DA ITALIA ANTIGA (VIII a.C.-II d.C.)

RUÍNAS DE UMA PAISAGEM  
ARQUEOLOGIA DAS CASAS DE FAZENDA DA ITÁLIA ANTIGA  
(VIII a.C. - II d.C.)

VOLUME II - ILUSTRAÇÕES

Tese de Doutorado apresentada  
ao Programa de Pós-Graduação em  
Antropologia Social do Depto. de  
Antropologia da FFLCH da USP, sob  
a orientação da Profa. Dra.  
Haiganuch Sarian.

UNIVERSIDADE DE SÃO PAULO  
1993

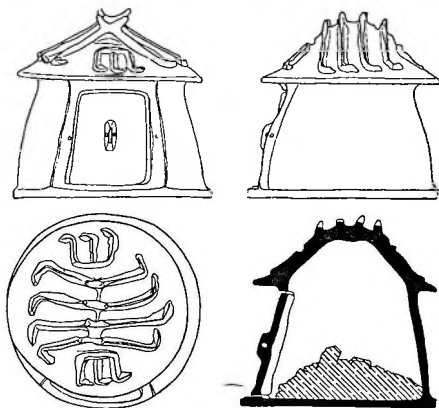


Fig. 1 - Urna cineraria da sepultura GG do Foro romano. VIII a.C. Alt. total: 25,5 cm. (Bloch,1971, fig. 11).

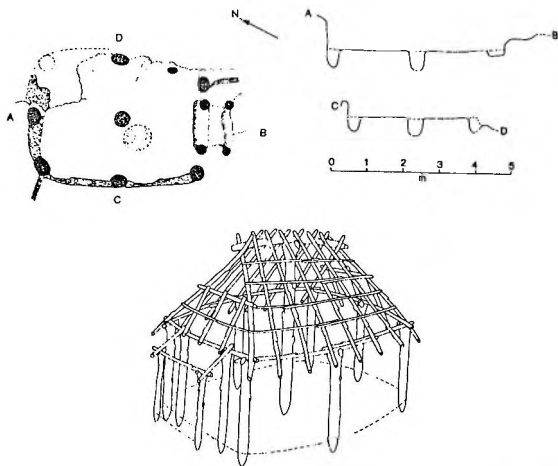


Fig. 2 - Roma, cabana ovalada sobre o Palatino, VIII a.C. Planimetria, séc. VIII a.C. (Coarelli, 1985:126).

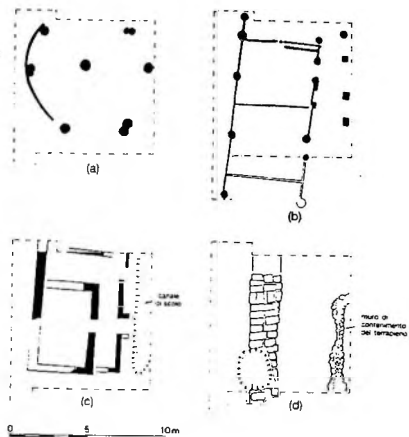


Fig. 3 - Etrúria Meridional, Veios. Planimetria das sucessivas estruturas junto à Porta NW da cidade. a) cabana circular em madeira, IX-VII a.C.; b) casa em madeira, VI a.C.; c) casa em pedra, VI-V a.C.; d) trecho da muralha etrusca, V a.C. (Potter, 1985, fig. 15)

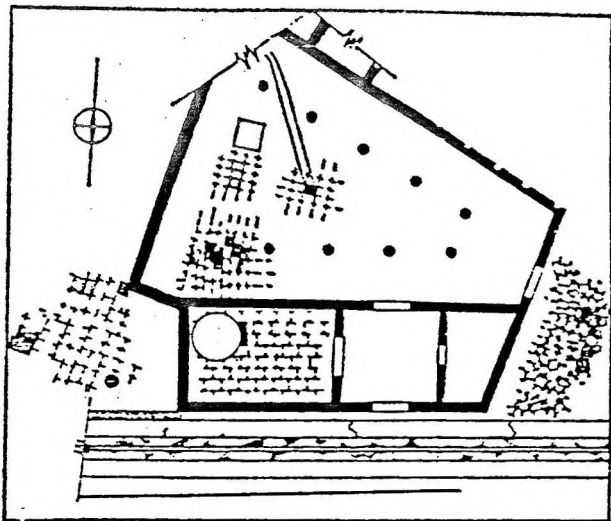


Fig. 4 - Roma, Foro. Planimetria da Regia em época republicana (Mackay,1975, fig. 2).

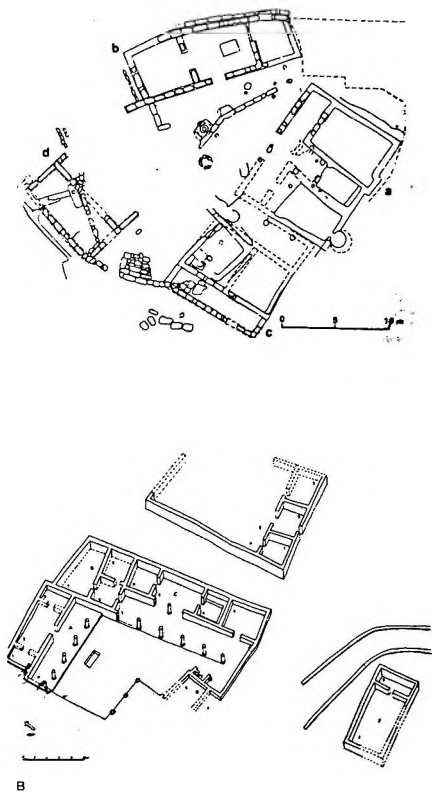


Fig. 5 - Etrúria, Acquarossa. Casas retangulares com fundações em pedra, 650-550 a.C.  
 a) casas da zona B; b) suposta Regia, visão axonométrica (Torelli, 1985:224-225).

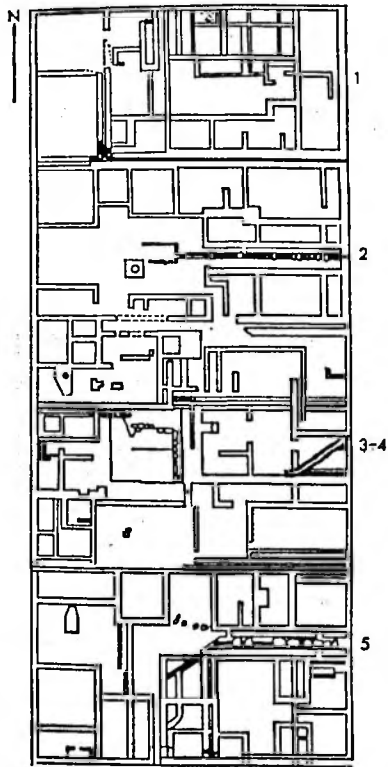


Fig. 6 - Etrúria scentrional, Marzabotto. Planimetria de uma Insula, Regio IV. Sécs. VI-V a.C. (Mackay,1975, fig. 5).

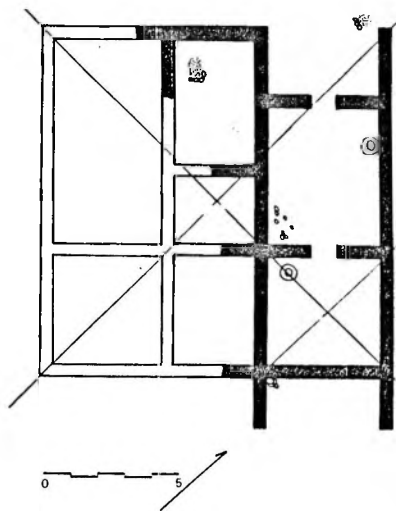


Fig. 7 - Metaponto. Planimetria semplificada da "Fattoria Fabrizio", meados IV a.C. (De Iulii, 1981, fig. 2).





Fig. 8 - Metaponto. Edificio de Tolve (Tolve - Catalogo della Mostra, 1973, tav. IX).

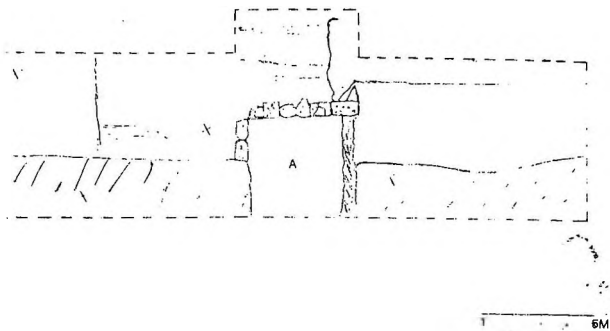


Fig. 9 - Subúrbio de Roma. Torre Nova. a) aposentos delimitados por muros em cappellaccio (Musco & Zaccagni, 1985, fig.69).

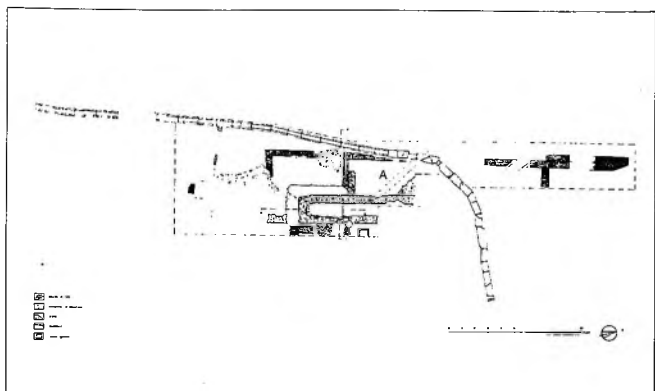


Fig. 10 - Subúrbio de Roma, via Polense Km 22. Giardini di Corcolle (Musco & Zaccagni, 1985, fig. 71).



Fig. 11 - Dragoncello, Acilia. Distribuição dos sítios médios-republicanos às margens do Tibre (Pellegrino, 1983:83).

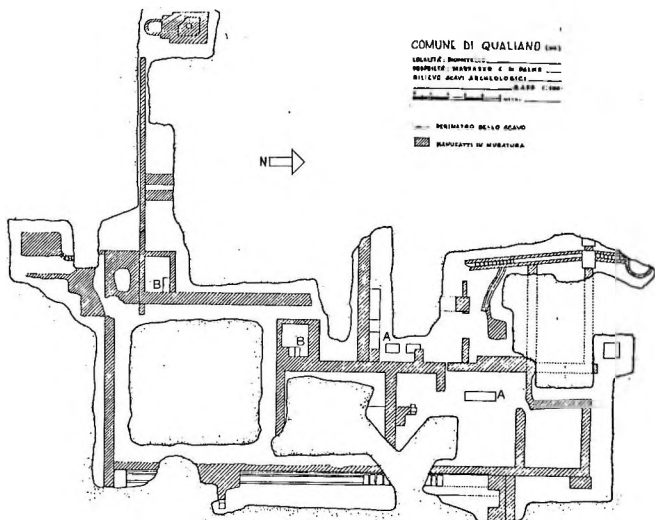


Fig. 12 - Campânia, Qualiano di Napoli, localidade Pioppitello. A) blocos esquadriados anteriores ao edifício; B) tanques com degraus (D'Ambrosio, 1972, tav. I).

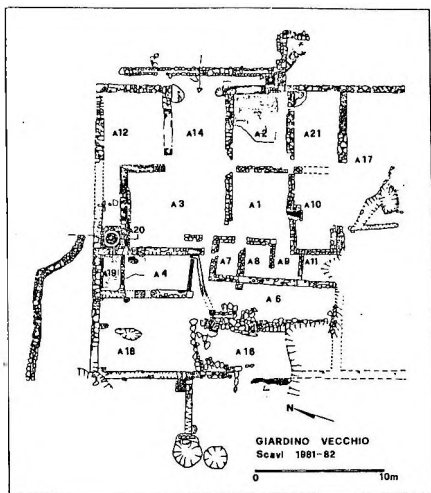


Fig. 13 - Cosa, valle d'Oro. Edificio de Giardino Vecchio. Planimetria geral (Cleuzza & Regoli, 1983, fig. 17).

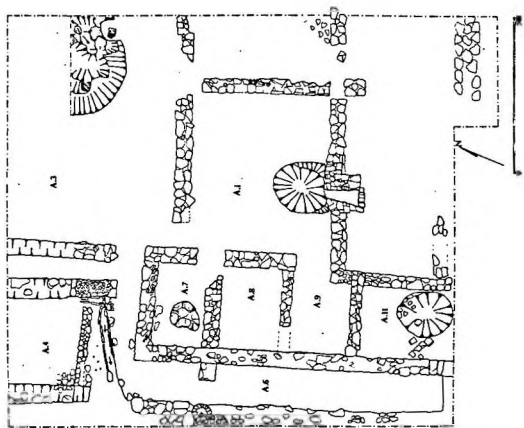
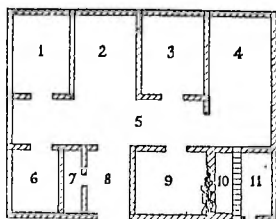
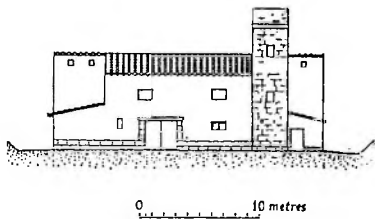


Fig. 14. Idem. detalhe do interior da construção (Celuzza & Regoli, 1982, fig. 10).



A



B

Fig. 15 - Etrúria, San Giovenale. Villa Sambuco. A) Planimetria; B) Reconstrução hipotética da fachada (Mckay, 1975, fig. 36).



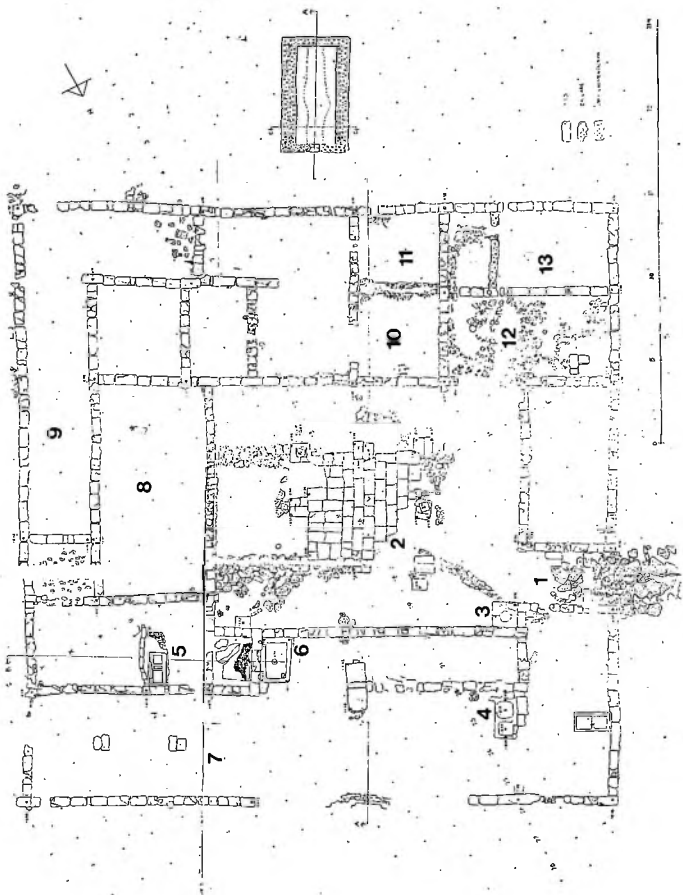


Fig. 16 - Etrúria, Blera. Edifício de Selvasecca (Berggren & Andren, 1969, fig. 2).

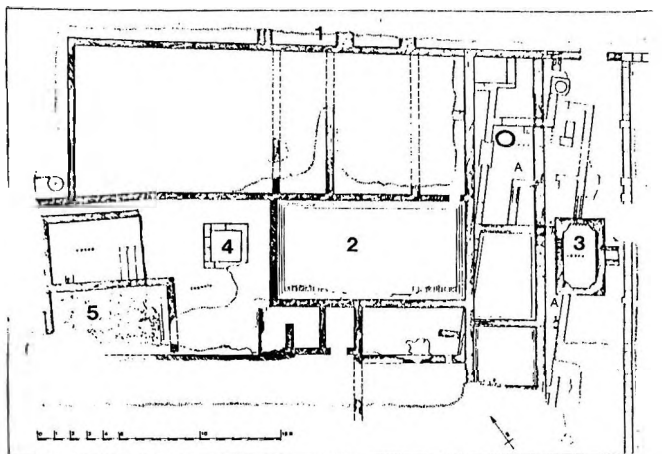


Fig. 17 - Subúrbio de Roma, Montegiardino. Edifícios superpostos. Planimetria geral da área escavada (Musco & Zaccagni, 1985, fig. 72).

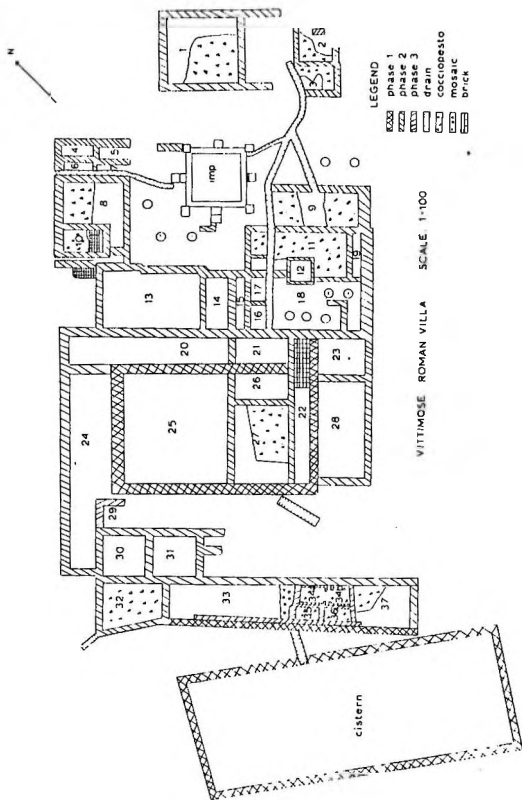


Fig. 18 - Vittimose, Buccino. Planimetria interpretativa do edificio (Dyson,1971, fig. 2).

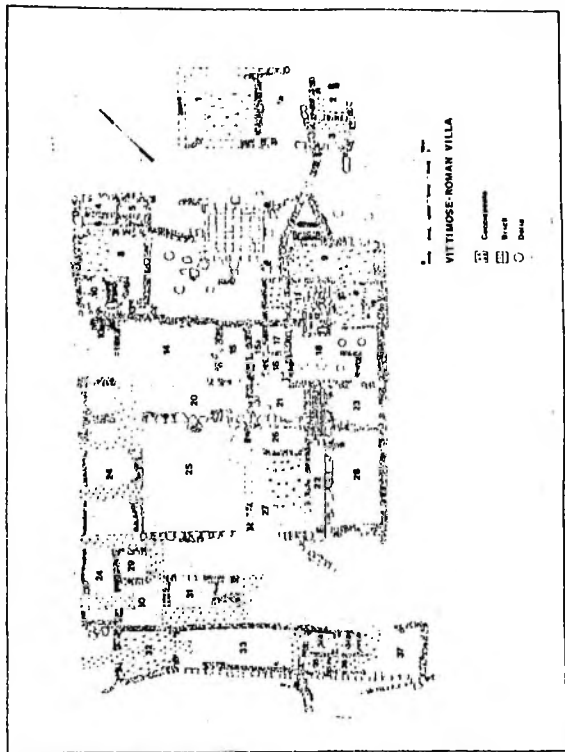
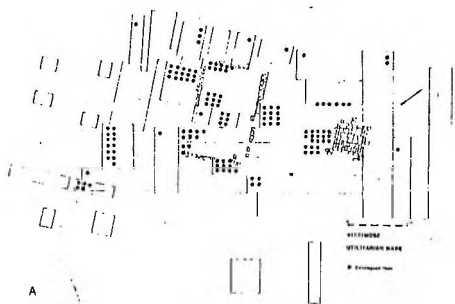
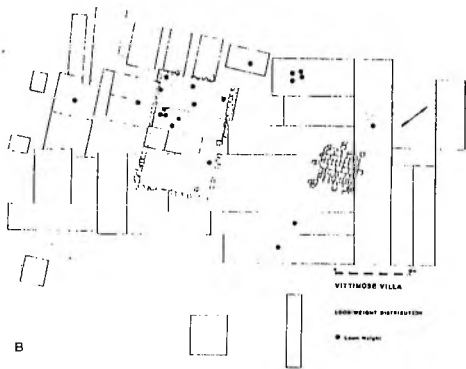


Fig. 19 - Idem. relevo planimétrico (Dyson, 1983, fig. 90).

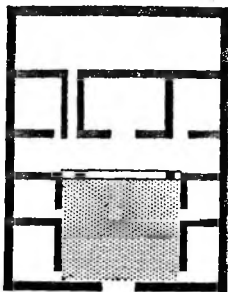


A

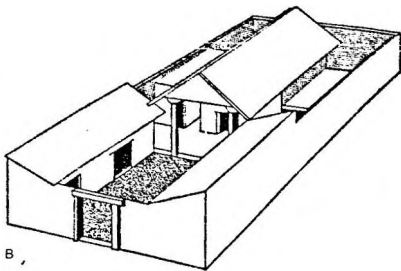


B

Fig. 20 - Idem. a) distribuição da cerâmica comum; b) distribuição dos pesos de tear (Dyson, 1983, figs. 16 e 15).

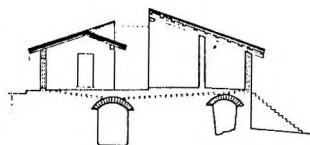
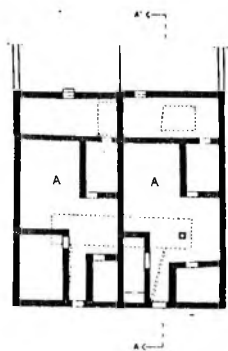


A

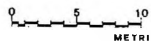


B

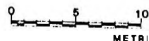
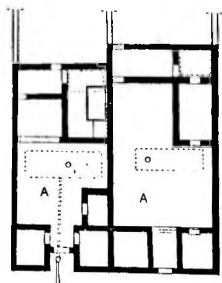
Fig. 21 - A casa itálica de Patroni, segundo a reconstrução de W. Graham. A) planimetria; B) Reconstrução axonométrica (Mckay, 1975, fig. 3).



SEZ A-A'



METRI



METRI

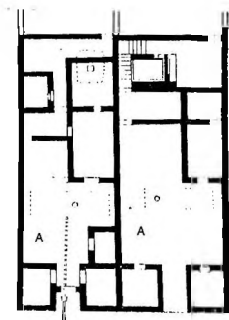


Fig. 22 - Cosa. Residências unifamiliares do centro urbano, III-II a.C. A) pátios com cisternas (Miele, 1989, figs. 17-18).

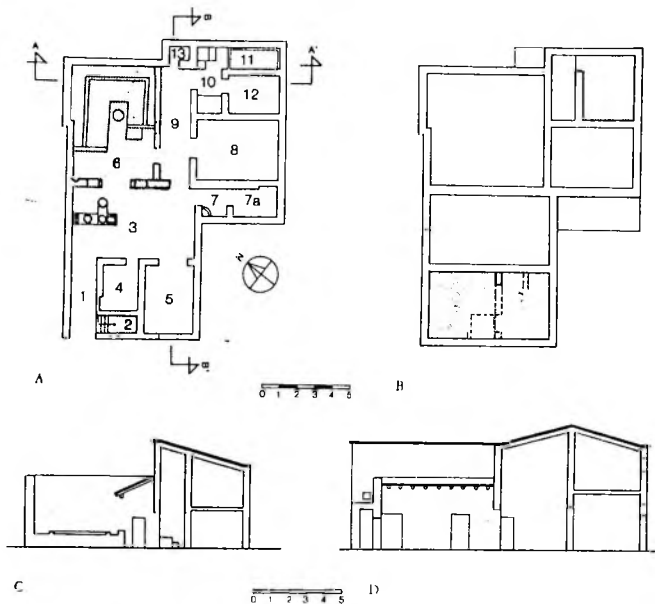


Fig. 23 - Pompéia. Casa I,11,16. A) Planimetria com 1) vestíbulo, 3) pátio, 6) tricínio e 10) cozinha. B) Andar superior. C) Secção A-A'. D) Secção B-B' (Miele,1989, fig. 3).



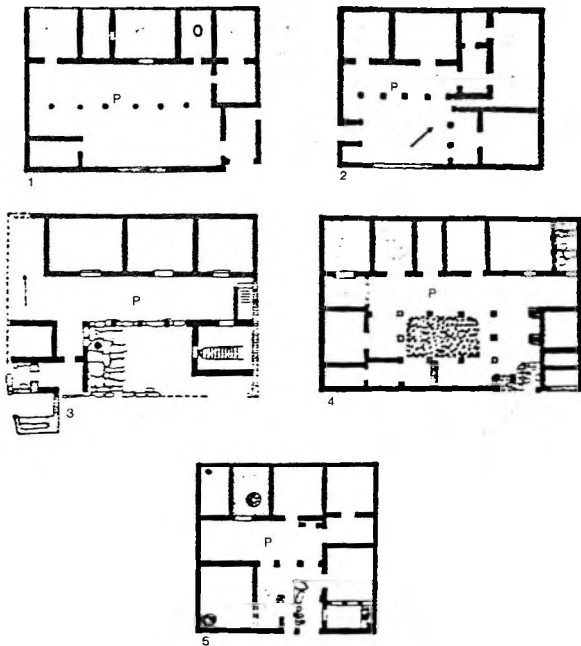


Fig. 24 - Casas Gregas. 1) Atenas, casa Demas; 2) Seuthopolis; 3) Pella; 4) Olinto, casa Aub; 5) villa dos bronzes. P) corredor interno ("pastas") (Jones et alii, 1973, fig. 16).

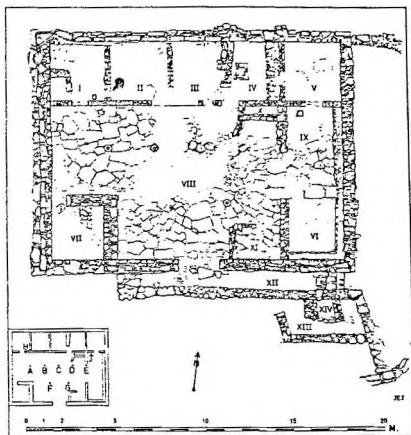


Fig. 25 - Ática, edificio de Vari, planimetría (Jones et alii, 1973, fig. 2).

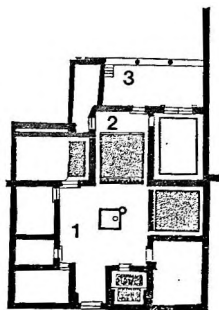


Fig. 26 - Cosa, centro urbano. "Sunny House". 1) átrio; 2) tablino; 3) pórtico de fundos (Mckay, 1975, fig. 23).

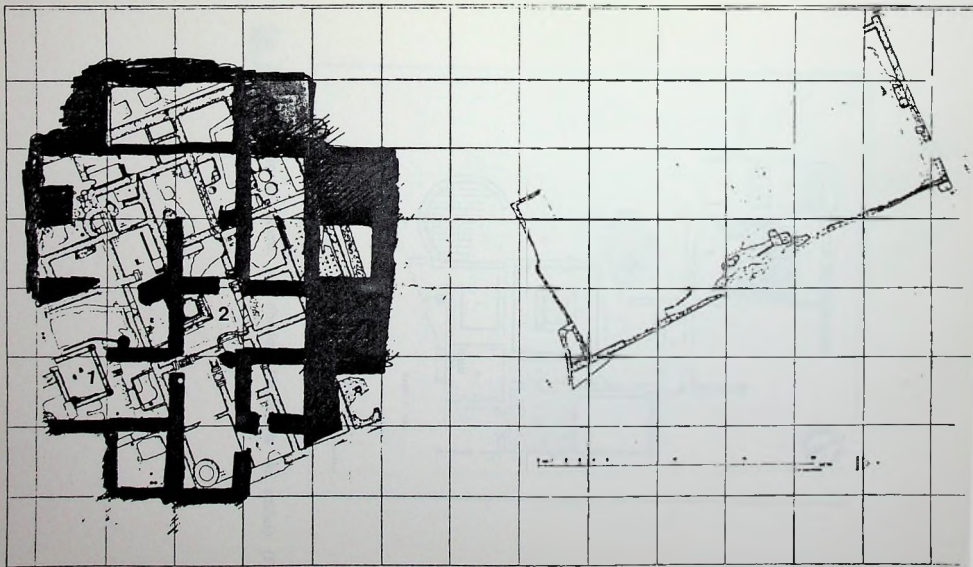


Fig. 27 - Subúrbio de Roma. Tor Vergata. Planimetria da área escavada (Musco & zaccagni, 1985, fig. 73).

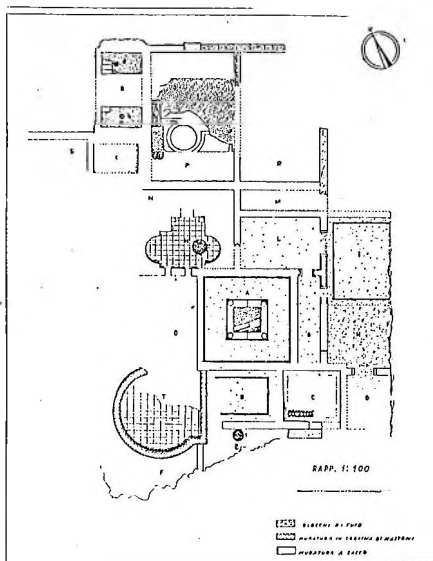


Fig. 28 - Subúrbio de Roma, via tiberina. Planimetria do edifício (Felletti May,1955:207).

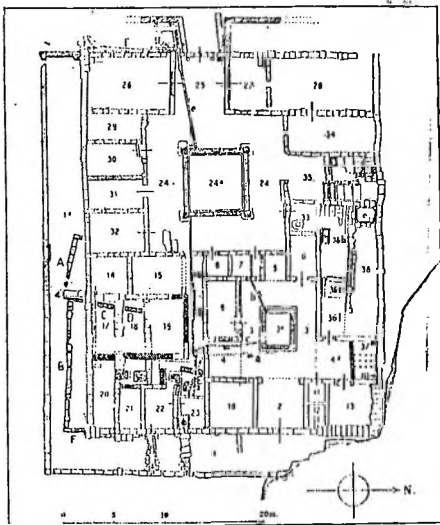


Fig. 29 - Subúrbio de Roma, localidade Monte delle Grotte. Planimetria geral do edfício (Stefani, 1944-45:54).

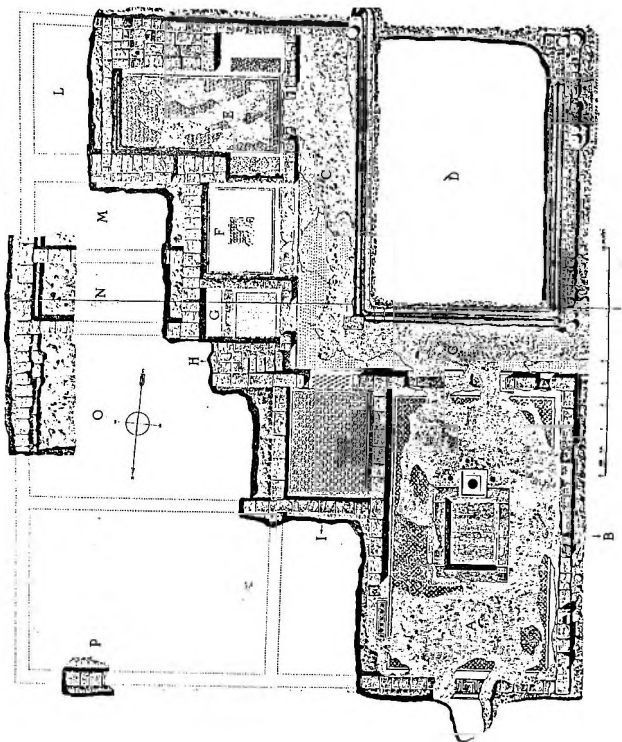


Fig. 30 - Subúrbio de Roma, localidade S. Basílio. Planimetria da área escavada (Lugli, 1930, tav. XX).

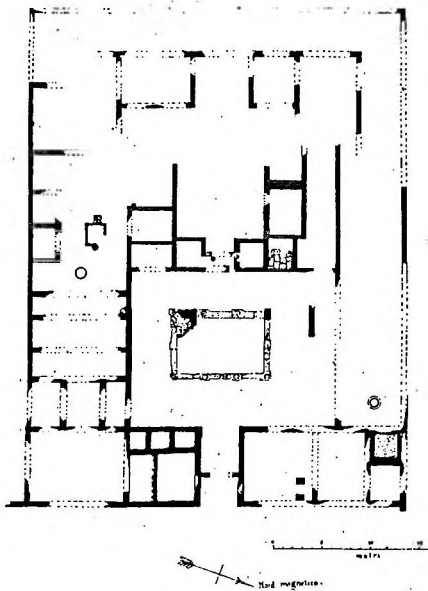


Fig. 31 - Etrúria meridional, localidade Portaccia (Pallottino, 1943, fig. 25).



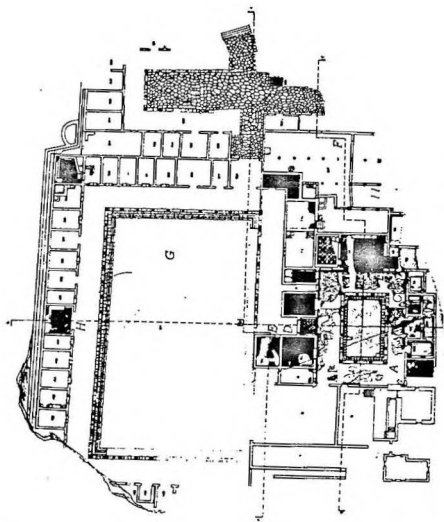


Fig. 32 - Lucus feroniae, uilla dos Volusii Saturnini. Planimetria do edifício em sua fase final (Torelli, 1985:36).

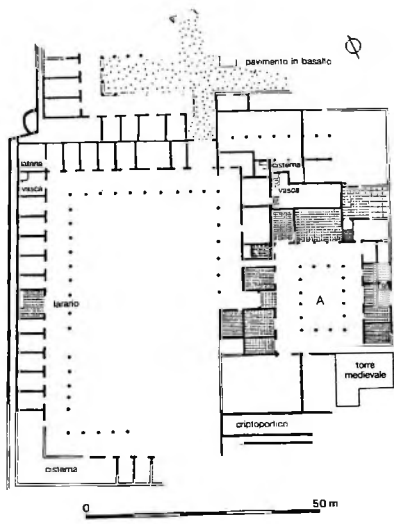


Fig. 33 - Idem, planimetria semplificata (Potter, 1985, fig. 38).

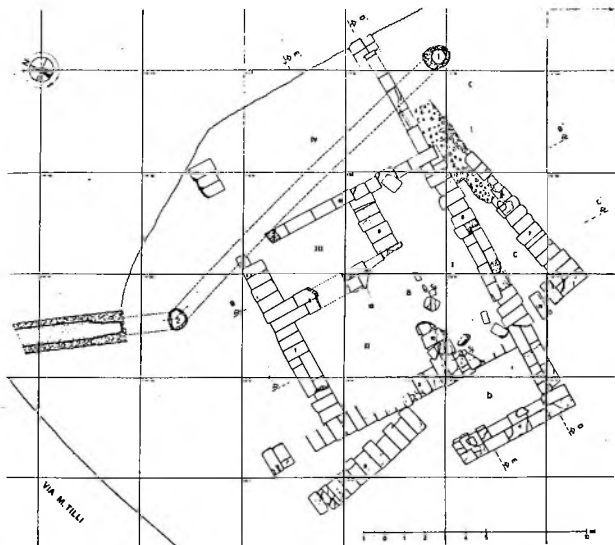


Fig. 34 - Subúrbio de Roma, via tiburtina, localidade Torre di Rebbia (Staffa & Messineo, 1984, fig. 50).

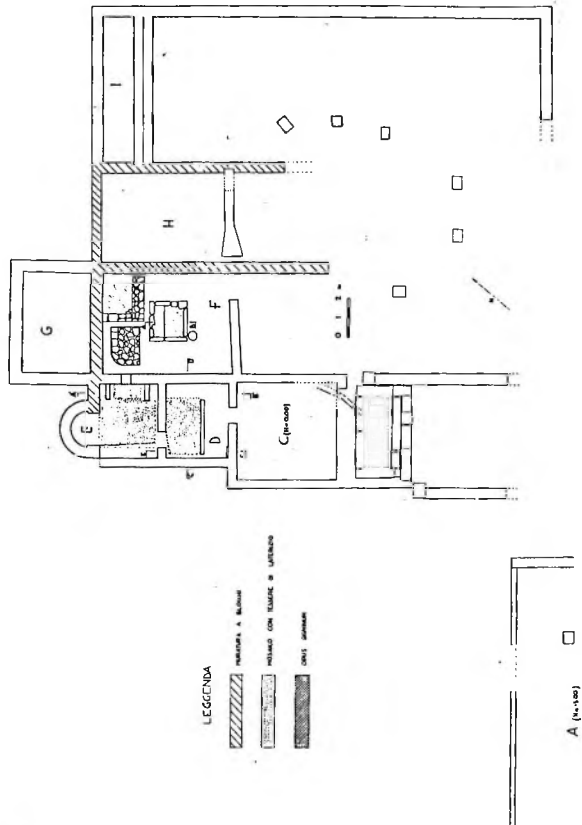


Fig. 35 - Etrúria meridional, localidade Monna Felice. Planimetria geral (Toti, 1966, fig. 1).

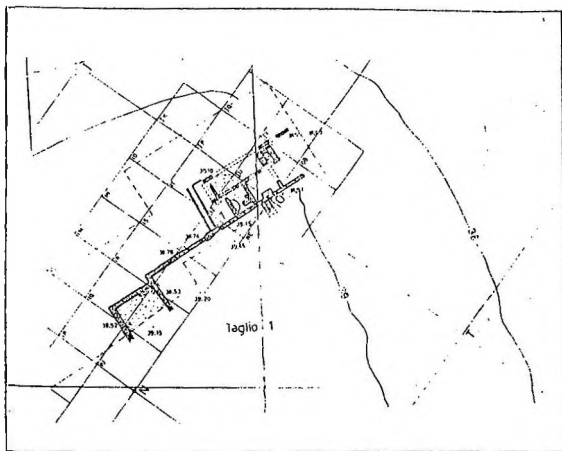


Fig. 36 - Subúrbio de Roma, via nomentana, edificio de Podere Anna. Planimetria da área escavada. 1) base circular de prensa (Bellini & Peri 1995 fig. 07)

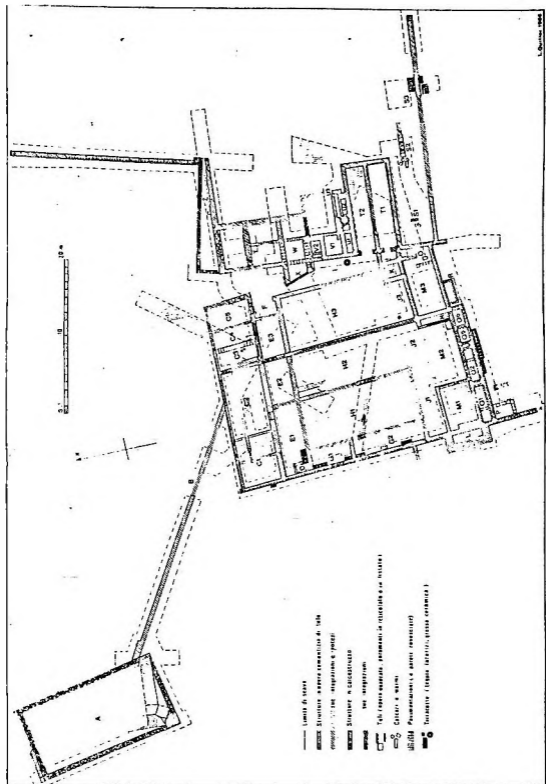


Fig. 37 - Subúrbio de Roma, via salária, localidade de Castel giubileo. Plano das trincheiras e planimetria do edifício (Quilici, 1976, fig. 12).

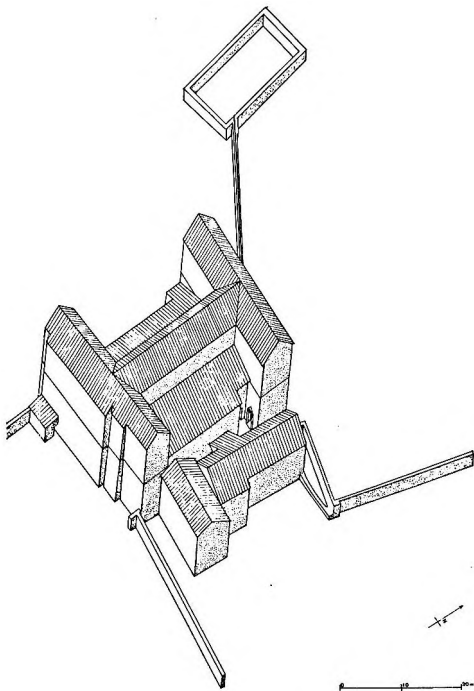


Fig. 38 - Idem. Proposta de reconstrução axonométrica (Quilici,1976, fig. 11).

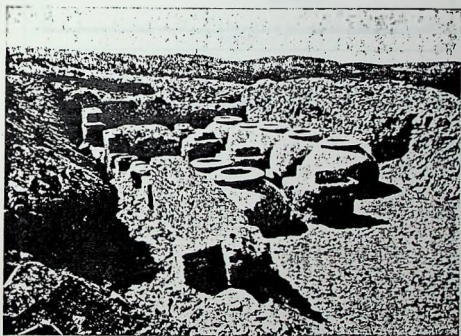
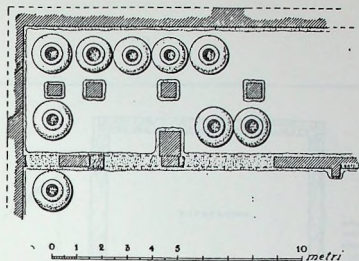


Fig. 39 - Lácio meridional, via cornélia, tenuta Casalotto. A) planimetria; B) foto (Romanelli, 1933, figs. 3 e 4).



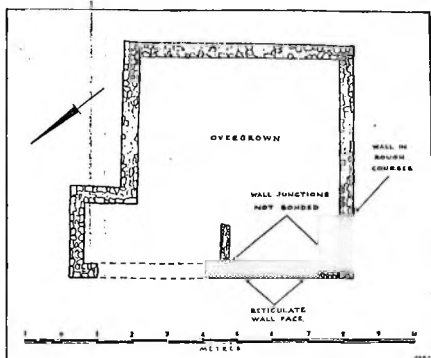


Fig. 40 - Capena, edificio de Monte Cuculo (Jones, 1962, fig. 17).

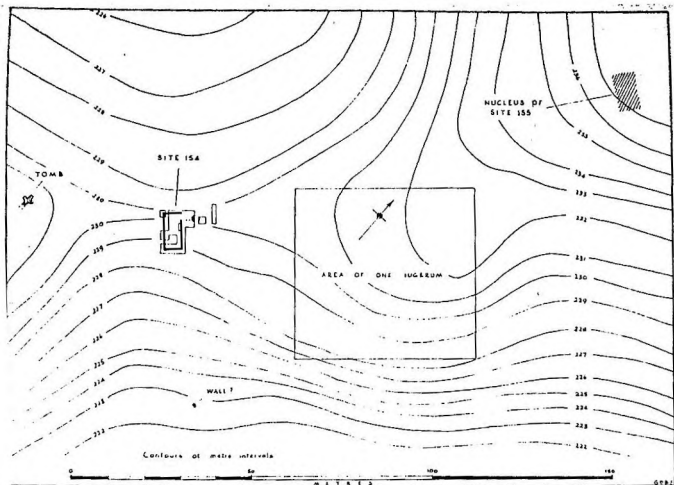


Fig. 41 - Capena, Monte Forco, sítio 154. Disposição geral da área (Jones, 1963, fig. 17).

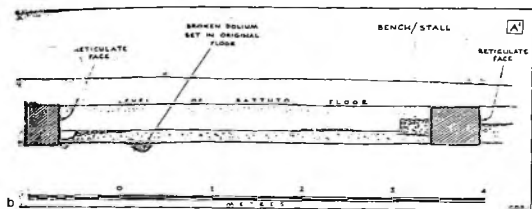
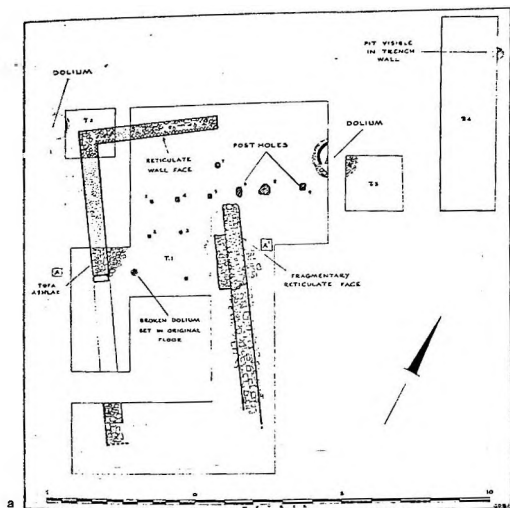


Fig. 42 - Idem. a) planimetria geral do edifício; b) secção A-A' (Jones, 1963, figs. 18 e 19).

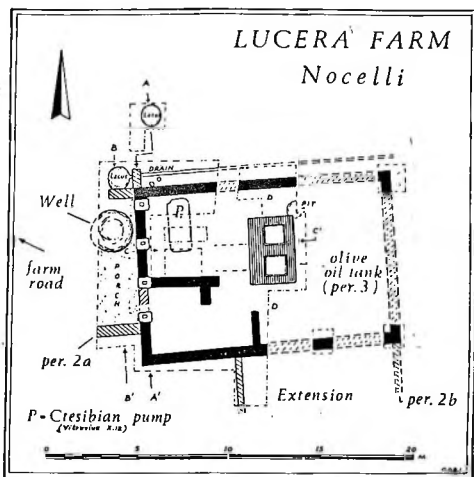


Fig. 43 - Apúlia. Edifício escavado em Lucera (Jones, 1980, fig. 6).

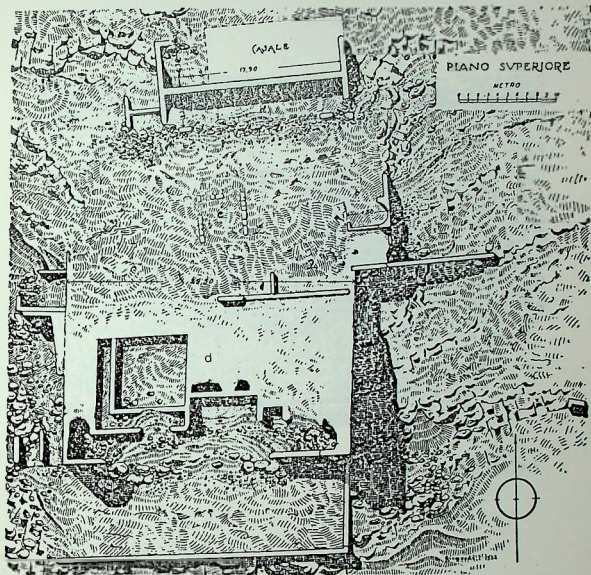


Fig. 44 - Lácio meridional, Terracina. "Villa de Galba", planimetria dos restos visíveis em superfície. c) implúvio do átrio; d) área do peristílio (Lugli, 1926:196).

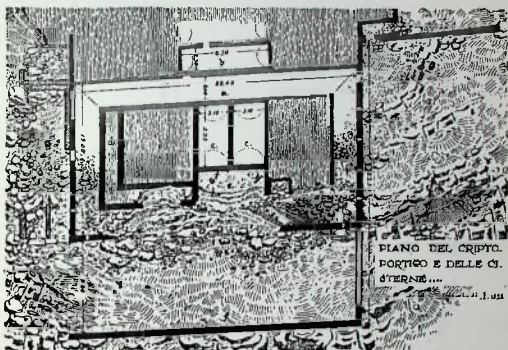


Fig. 45 - Idem. Planimetria das substrações. B) e c) cisternas (Lugli, 1926:194).

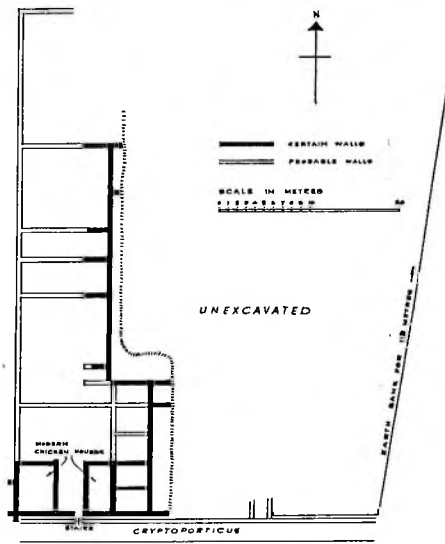


Fig. 46 - Sutri. Edificio de San Giovanni a Pollo. Planimetria simplificada da área escavada (Duncan, 1958, fig. 9).

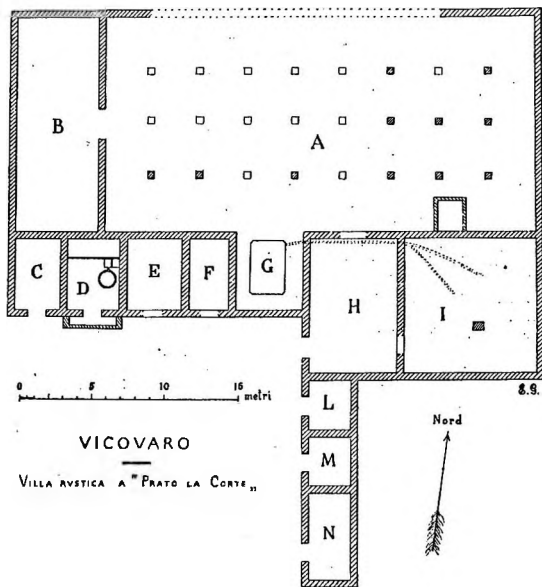


Fig. 47 - Úmbria, Vicovaro, localidade Prato la Corte. Planimetria do edifício. D) torcular; G) grande tanque associado a I; L-N) *cubicula* (Lugli, 1930, fig.20).



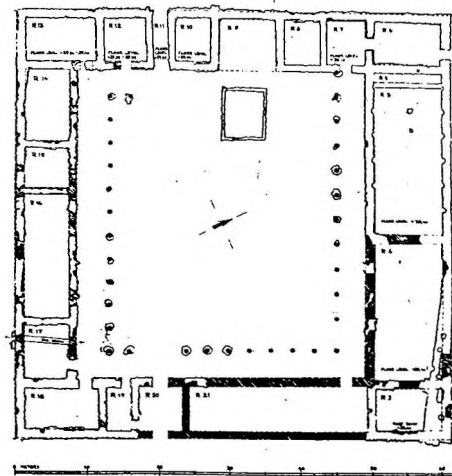


Fig. 48 - Etrúria, Murlo. Planimetria do edifício do século VI a.C. (Torelli,1985:265).

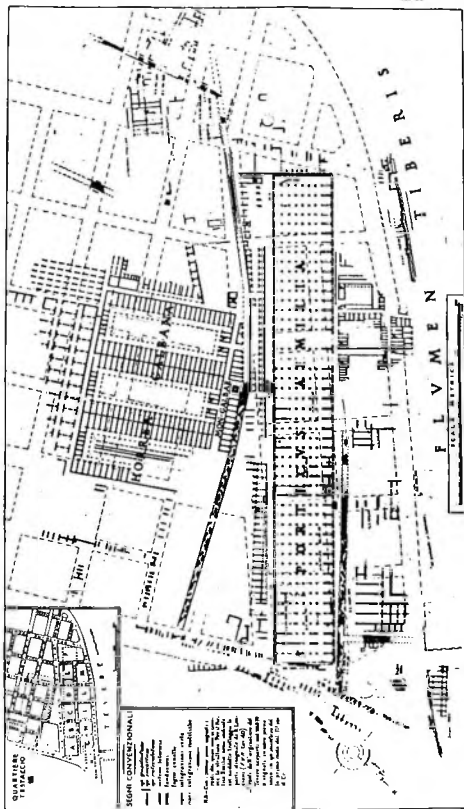


Fig. 49 - Roma, zona do "Emporium". Planimetria reconstituída da Porticus Aemilia e dos "Horrea Galbana" (Coarelli, 1985:349).

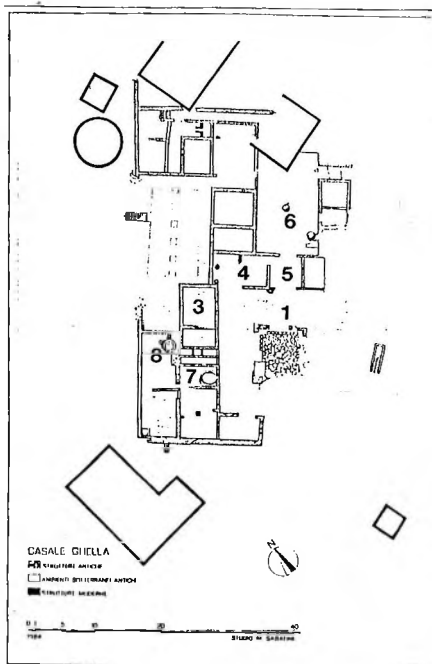


Fig. 50 - Subúrbio de Roma. Edifício de Casale Ghella. Planimetria geral (Messineo et alii, 1985, fig. 133).

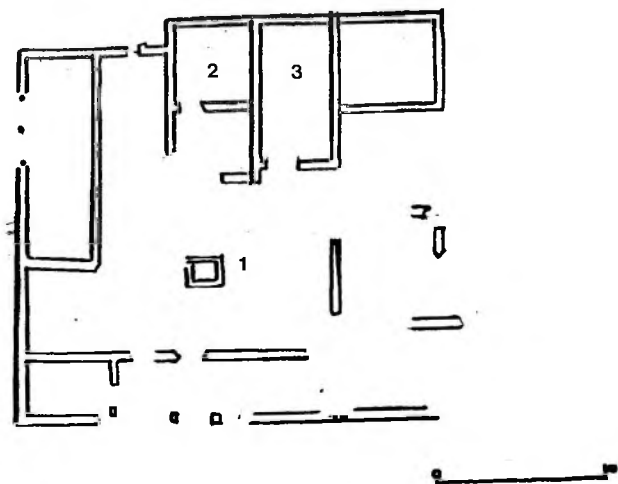


Fig. 51 - Lucus Feroniae, edificio Standa. Planimetria da fase 1 (fase vermelha)  
(Muzzioli, 1985, fig. 45).

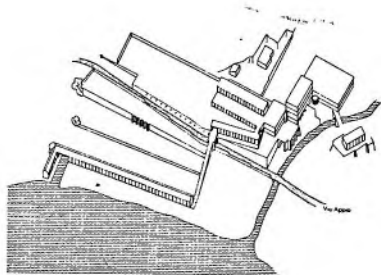


Fig. 52 - Lácio meridional, Villa de Sperlonga. Reconstrução axonométrica (Mielsch,1987, fig.23).

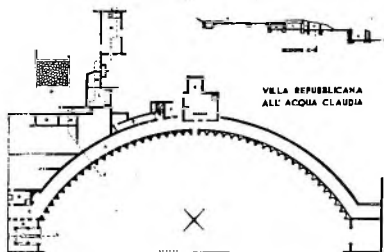


Fig. 53 - Etrúria, Anguillara Sabazia. Planimetria do edifício às margens do lago de Bracciano (Mielsch,1987, fig. 28).

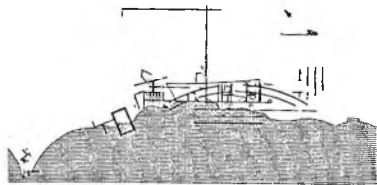


Fig. 54 - Lácio meridional, Anzio. Planimetria esquemática dos restos visíveis (Mielsch, 1987, fig. 29).

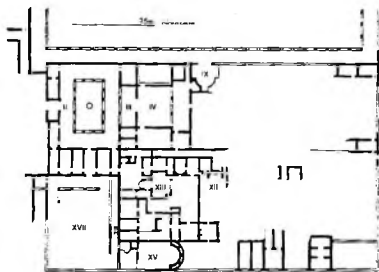


Fig. 55 - Lácio, Marino. Villa de Voconius Pollio. II) peristílio; IV) oecus; XII-XVII) termas (Mielsch, 1987, fig. 37).

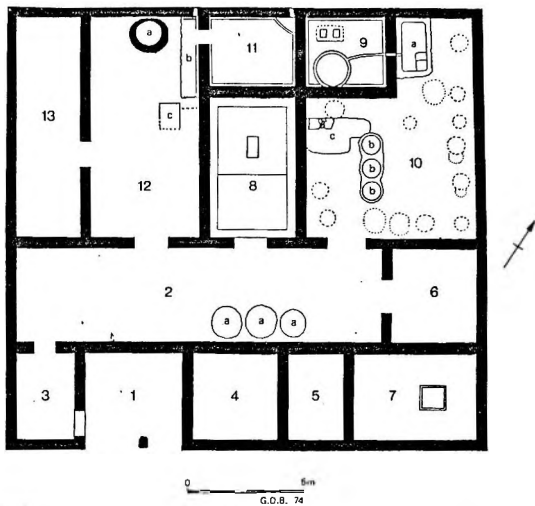


Fig. 56 - Apúlia, Foggia. Posta crusta, planimetria do edifício na fase II. 2) corredor com dolia; 8) triclinio; 9) prensa; 10) tanques de decantação e depósito de dolia (De Boe, 1975, fig. 27).

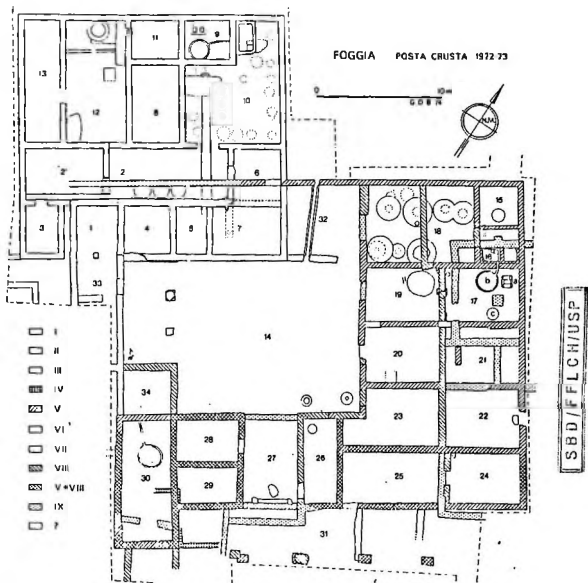


Fig. 57 - Idem. Planta compósita dos diferentes períodos (De Boe, 1975, fig. 26).



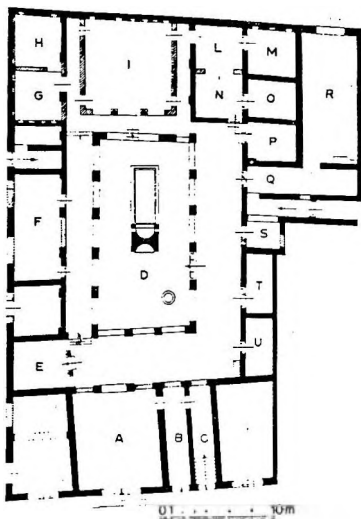


Fig. 58 - Óstia, domus delle colonne (Pavolini, 1986, fig. 1).

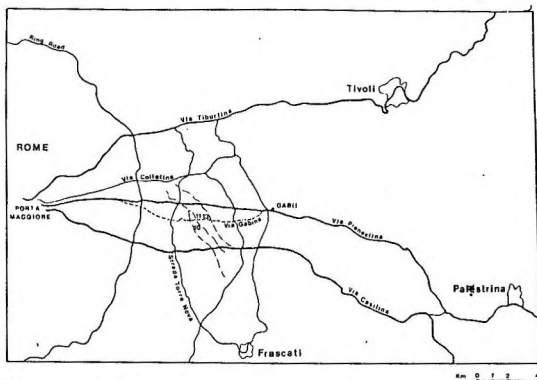


Fig. 59 - Subúrbio de Roma, via Gabínia. Localização do sítio 11 (Widrig, 1983, fig. 1).



Fig. 60 - Idem. Planimetria da fase Ia (Widrig, 1983, fig. 2).

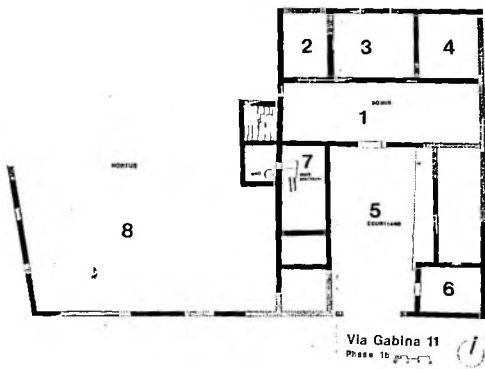


Fig. 61 - Idem. Planimetria da fase 1b (Widrig,1983, fig. 3).

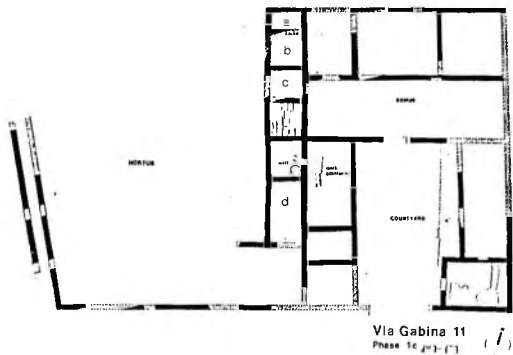


Fig. 62 - Idem. Planimetria da fase Ic (Widrig, 1983, fig. 6).

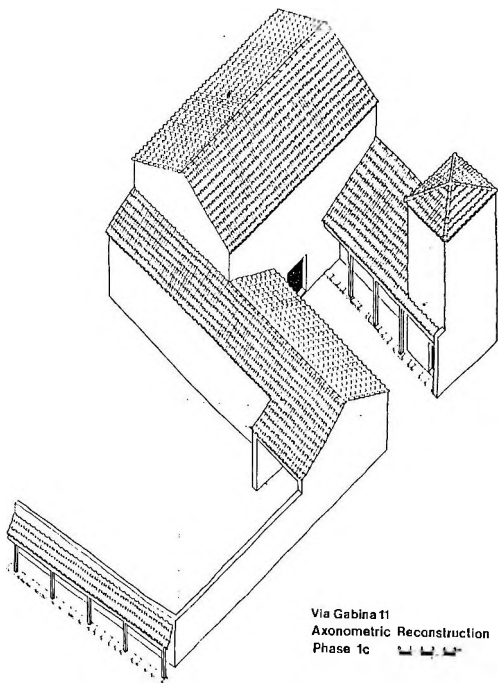


Fig. 63 - Idem. Reconstrução axonométrica da fase 1c (Widrig, 1983, fig. 7).

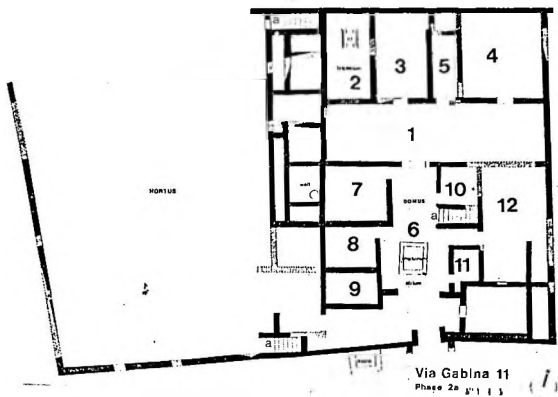


Fig. 64 - Idem. Planimetria da fase 2a (Widrig, 1983, fig. 9).

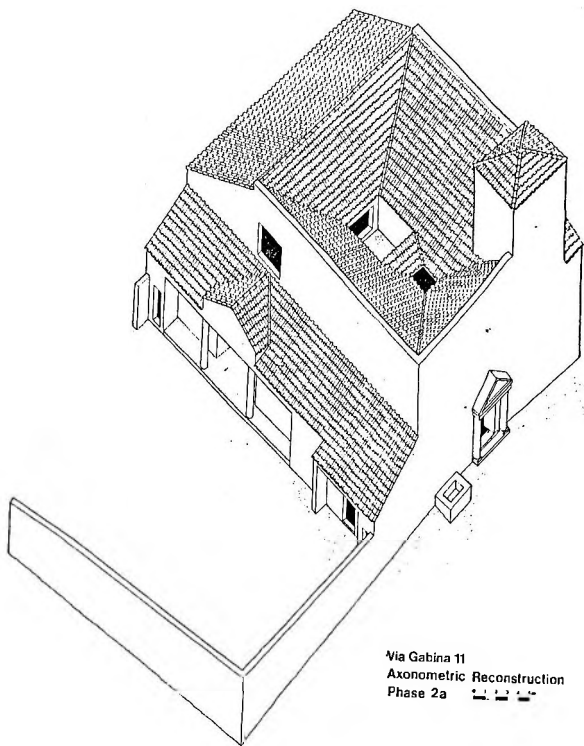
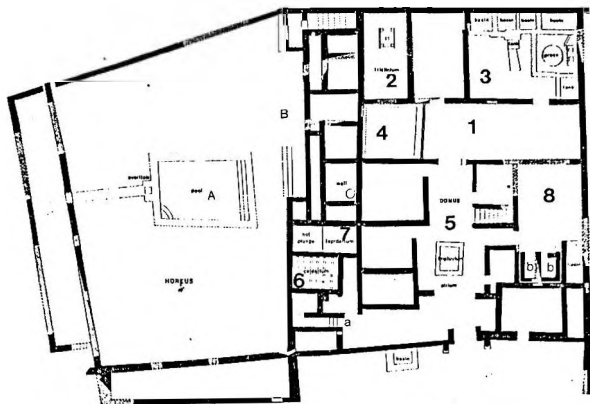


Fig. 65 - Idem. Reconstrução axonométrica da fase 2a (Widrig, 1983, fig. 10).



Via Gabina 11  
Phase 2b/c *(i)*

Fig. 66 - Idem. Planimetria das fases 2b/c (Widrig, 1983, fig. 14).



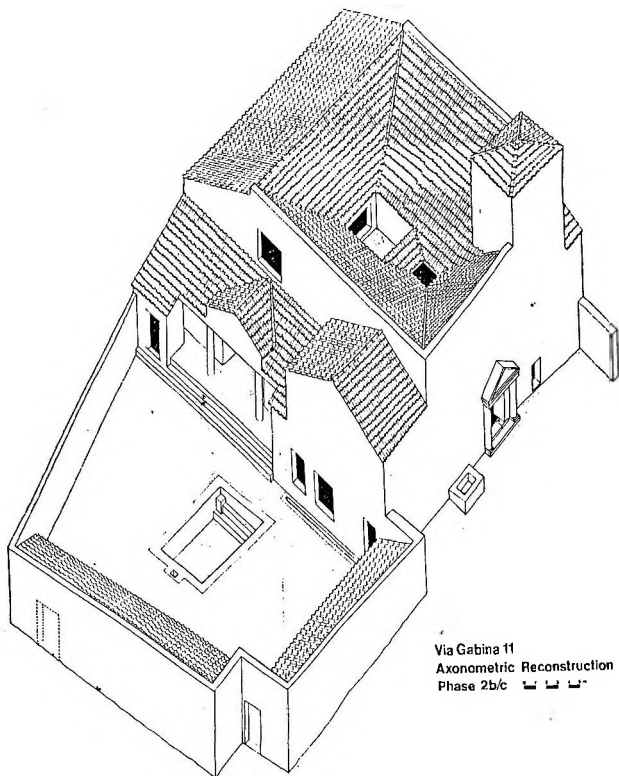


Fig. 67 - Idem. reconstrução axonométrica das fases 2b/c (Widrig,1983, fig. 15).

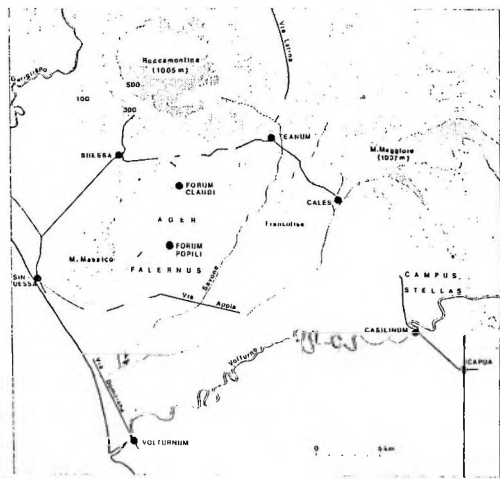


Fig. 68 - Campânia setentrional. Mapa da região de Frusino (Cotton & Métraux, 1985: xviii).

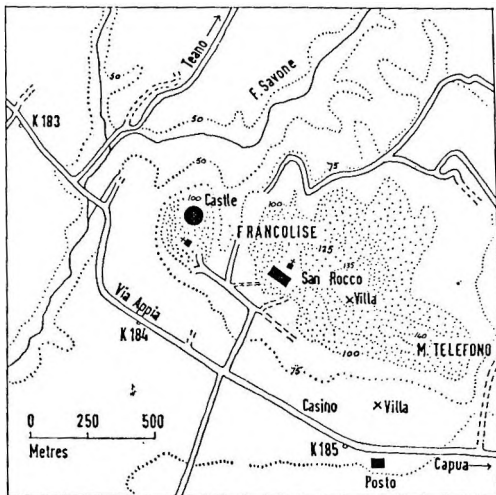


Fig. 69 - Campânia setentrional. Colina de Francolise. Posição dos sítios de Posto e S. rocco (Cotton & Métraux, 1985, fig. 2).

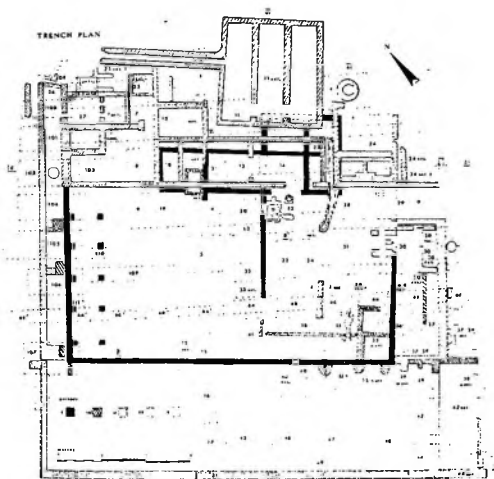


Fig. 70 - Francolise, Posto. Planta compósita com indicação do plano de trincheiras (Carp. 1970, fig. 2)

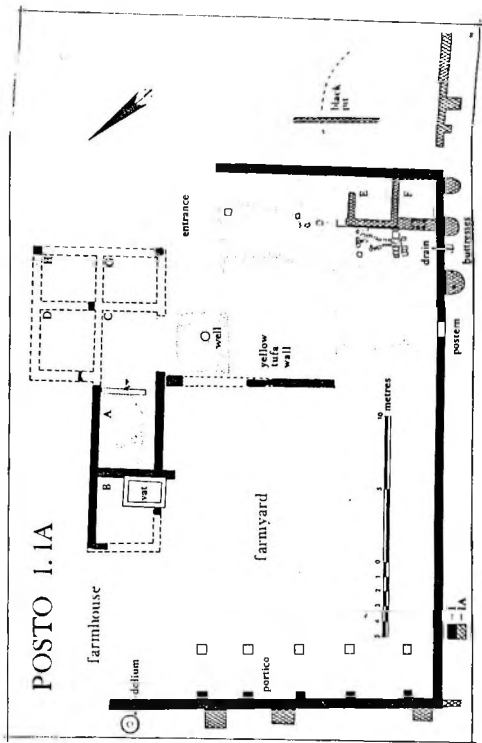


Fig. 71 - Idem. Planimetria das fases 1 e 1A (Cotton, 1979, fig. 4).

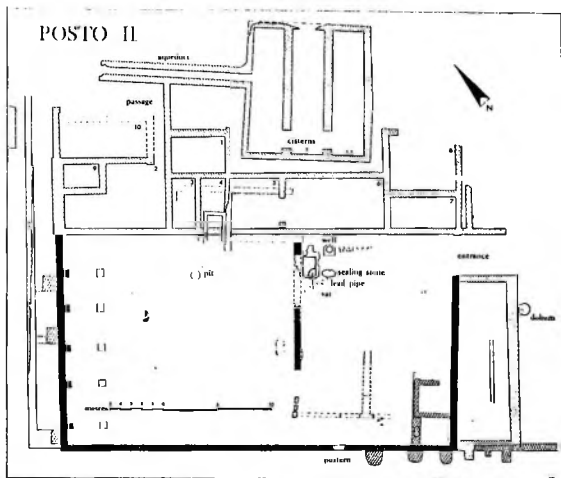


Fig. 72 - Idem. Planimetria da fase 2 (Cotton, 1979, fig. 4).

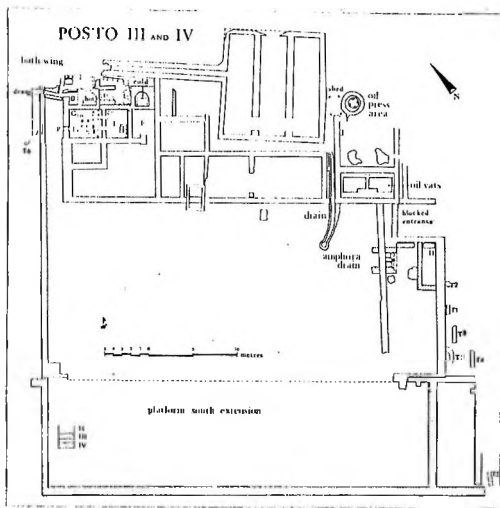


Fig. 73 - Idem. Planimetria das fases 3/4 (Cotton, 1979, fig. 10).

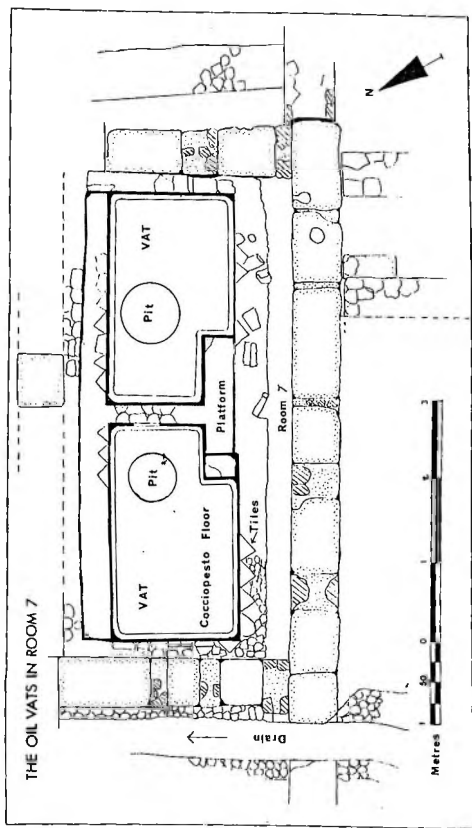


Fig. 74 - Idem. Planta dos tanques de decantação do ambiente 7 (Cotton, 1979, fig. 11).



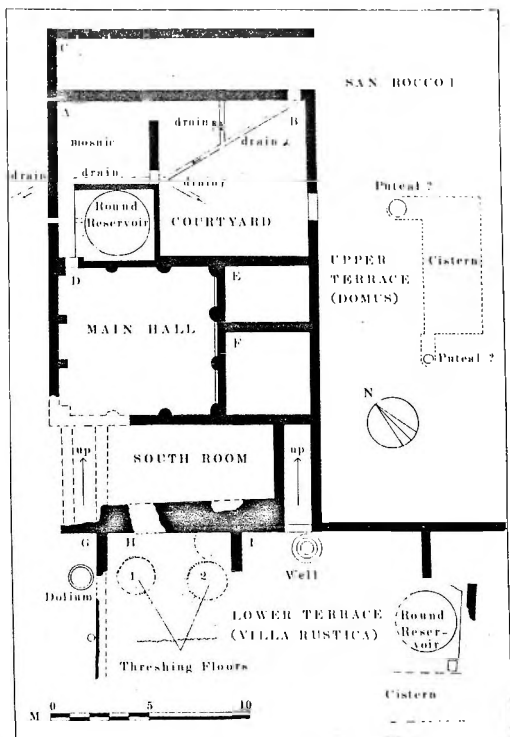


Fig. 75 - Francolise, S. Rocco. Planimetria da fase 1 (Cotton & Métraux, 1985, fig. 3).

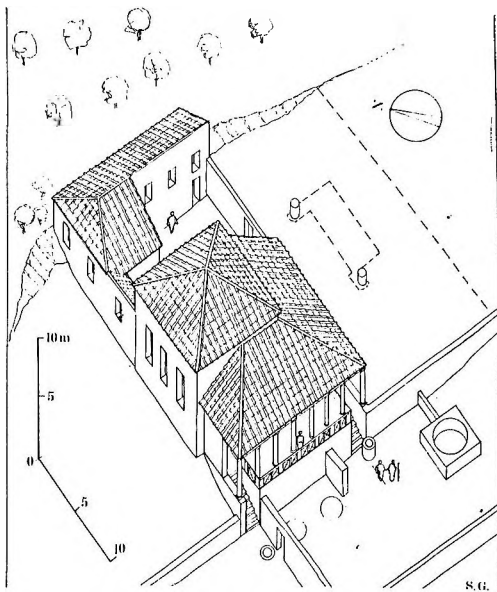


Fig. 76 - Idem. Reconstrução axonométrica da fase 1 (Cotton & Métraux, 1985, fig. 3a).

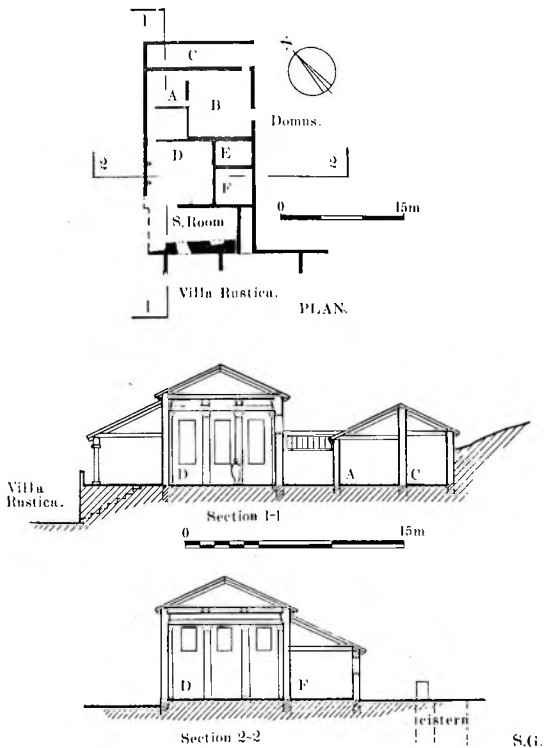


Fig. 77 - Idem. Secções reconstruídas da fase 1 (Cotton & Métraux, 1985, fig. 3b).

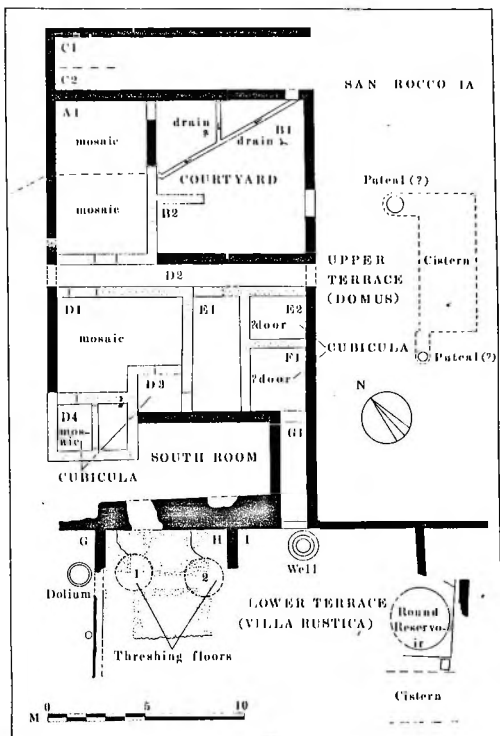


Fig. 78 - Idem. Planimetria da fase 1A (Cotton & Métraux, 1985, fig. 5).

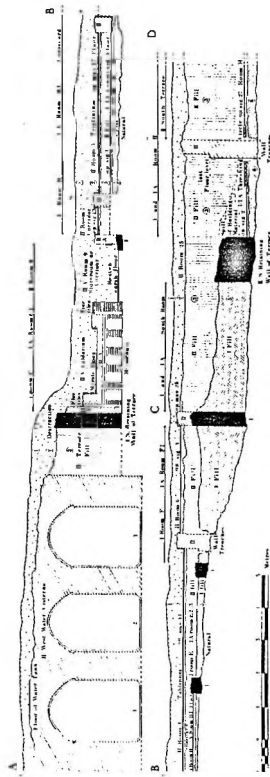


Fig. 79 - Idem. Seção estratigráfica do sítio (Cotton & Métraux, 1985, fig. 4).



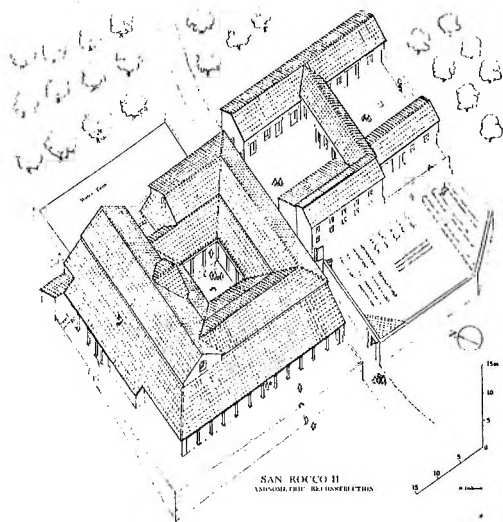


Fig. 81 - Idem. Reconstrução axonométrica da fase 2 (Cotton & Métraux, 1985, fig. 12).

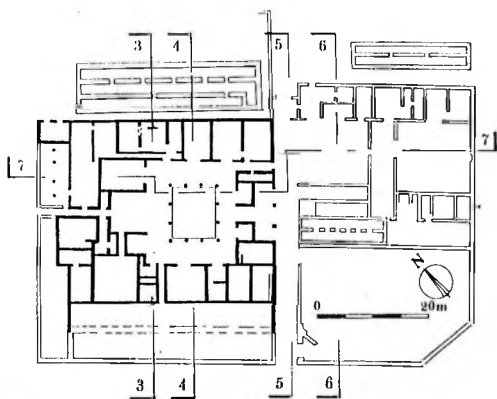


Fig. 82 - Idem. Plano das secções do sítio (Cotton & Métraux, 1985, fig. 12a).



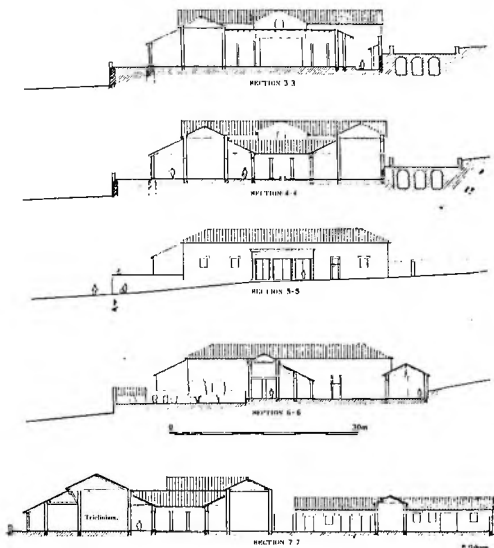


Fig. 83 - Idem. Secções reconstruídas do sítio, fase 2 (Cotton & Métraux, 1985, fig. 12b).

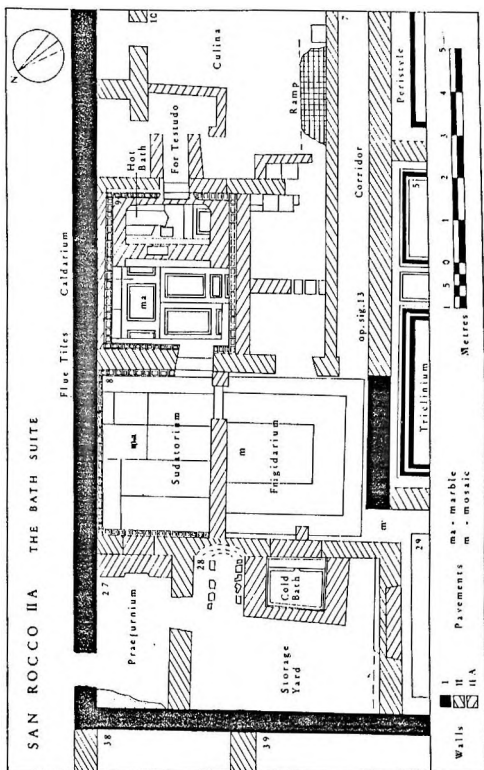


Fig. 84 - Idem. Planimetria das termas da fase 2a (Cotton & Métraux, 1985, fig. 8).

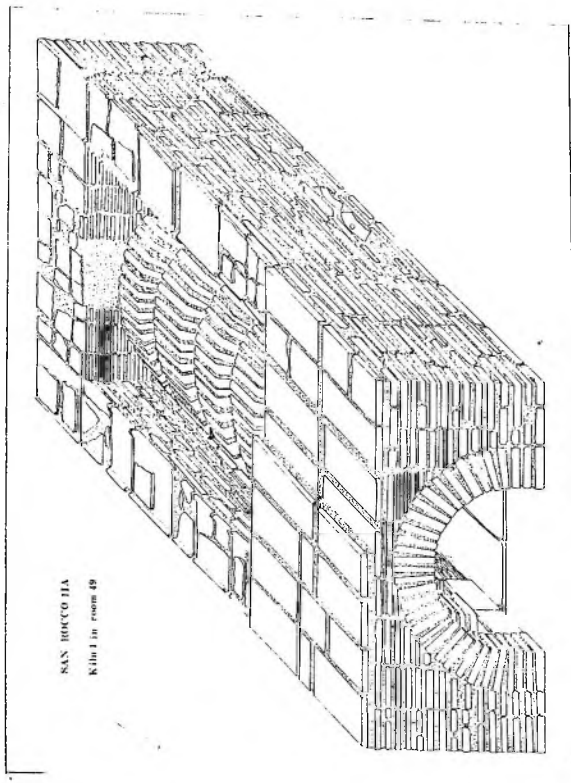


Fig. 85 - Idem. Reconstrução do forno I, amb. 49 (Cotton & Métraux, 1985, fig. 9).

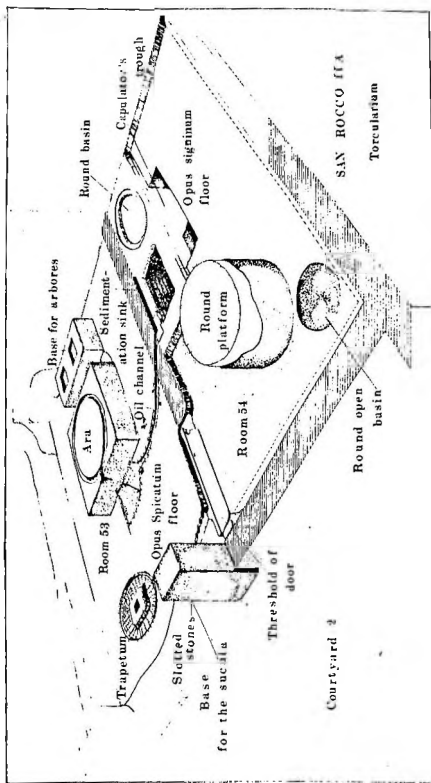


Fig. 86 - Idem. Reconstrução do torcular e do ambiente 54 (Cotton & Métraux, 1985, fig. 10).

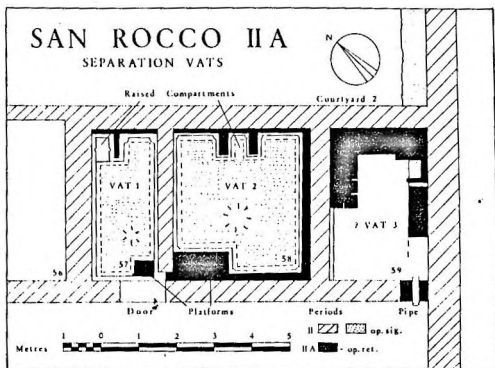


Fig. 87 - Idem. Planimetria dos tanques de decantação (Cotton & Métraux, 1985, fig. 11).

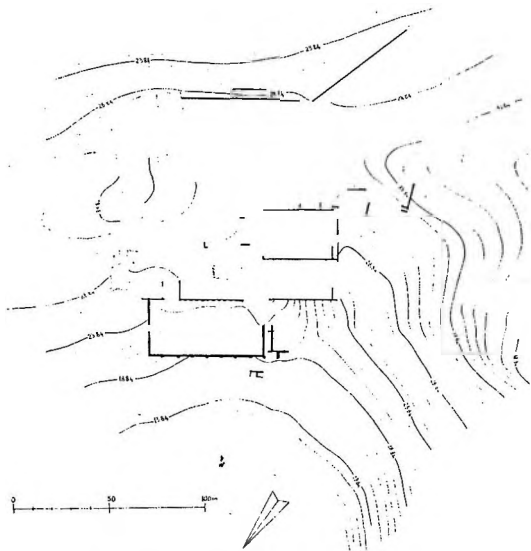
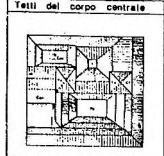


Fig. 88 - Casa, vale do rio Orgo. Planimetria dos restos antigos, visíveis sobre a colina de Settefinestre (Carandini et alii, 1985, I, 1, fig. 133).

Periodo I

← Muro Altare

1  
Tetti del corpo centrale



2  
Primo piano del corpo centrale



3  
Pozze, cisterne e basamento

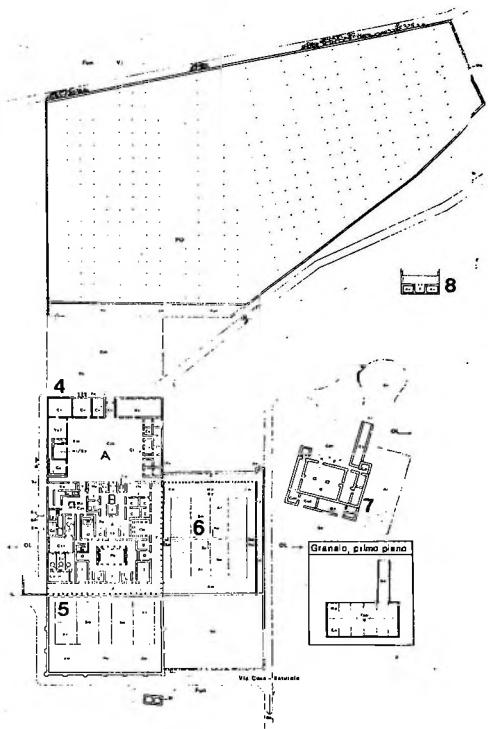


Fig. 89 - Settefinestre. Planimetria geral do edificio no periodo I (Carandini et alii, 1985, I, 1, fig. 139).

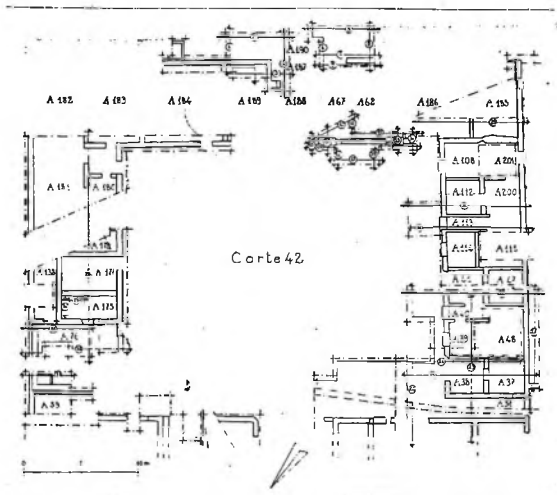


Fig. 90 - Idem. Pátio rústico 42. Plano de trincheiras e numeração dos ambientes (Carandini et alii, 1985, 1, 2, fig. 255).



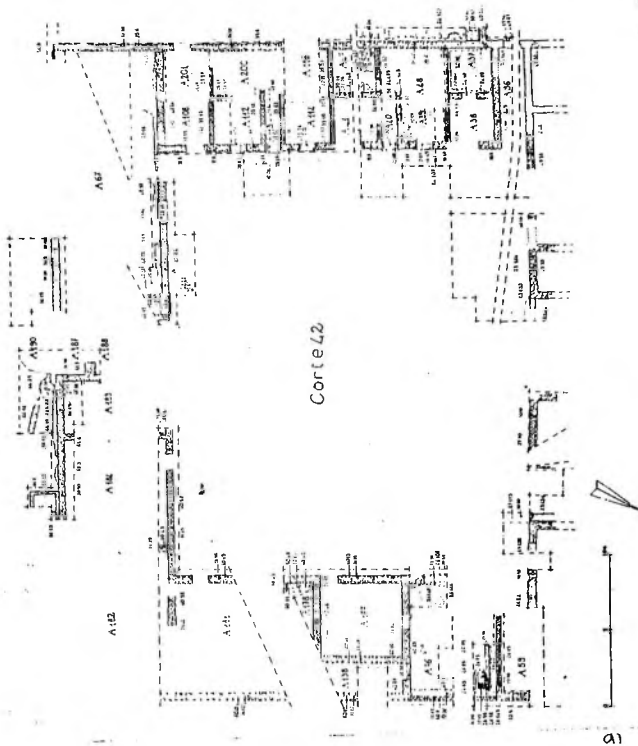


Fig. 91 - Idem. Planimetria dos ambientes do pátio 42 (Carandini et alii, 1985, I, 2, fig. 256a)

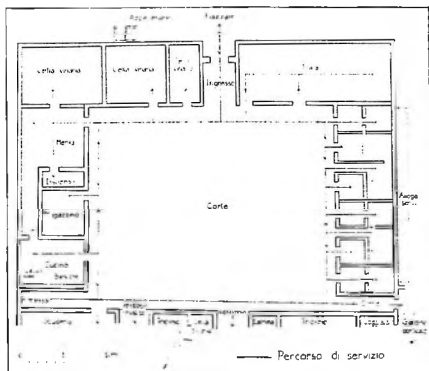


Fig. 92 - Idem. Planimetria interpretativa dos ambientes do pátio 42 (Carandini et alii, 1985, I, 2, fig. 256b).

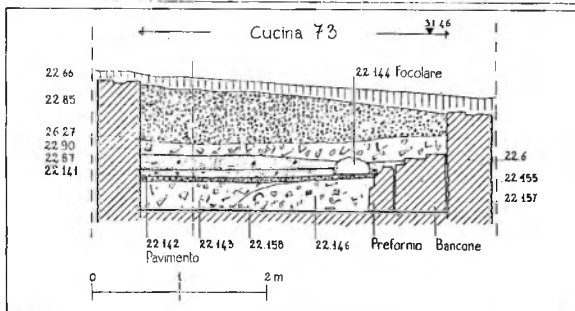


Fig. 93 - Idem. Seção estratigráfica do ambiente 73 (Carandini et alii, 1985, I, 2, fig. 142).

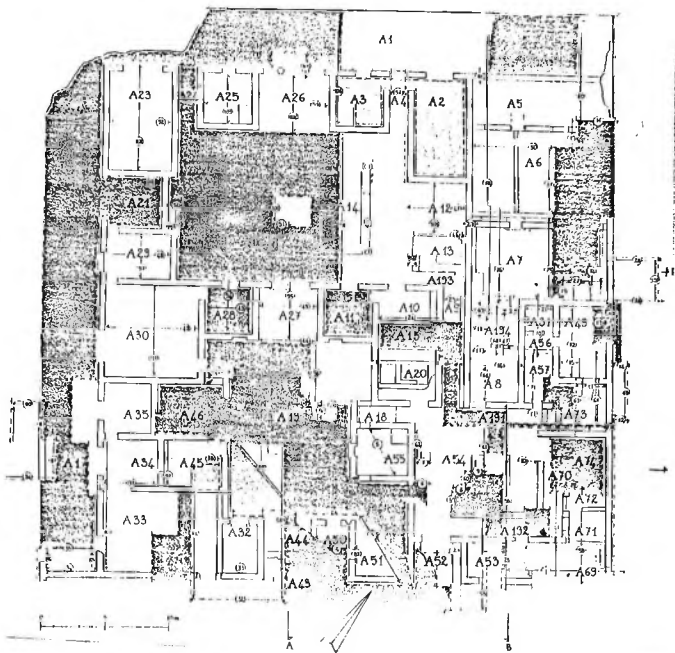


Fig. 94 - Idem. Corpo central, plano das trincheiras e numeração dos ambientes (Carandini et alii, 1985, 1.2, fig. 6).

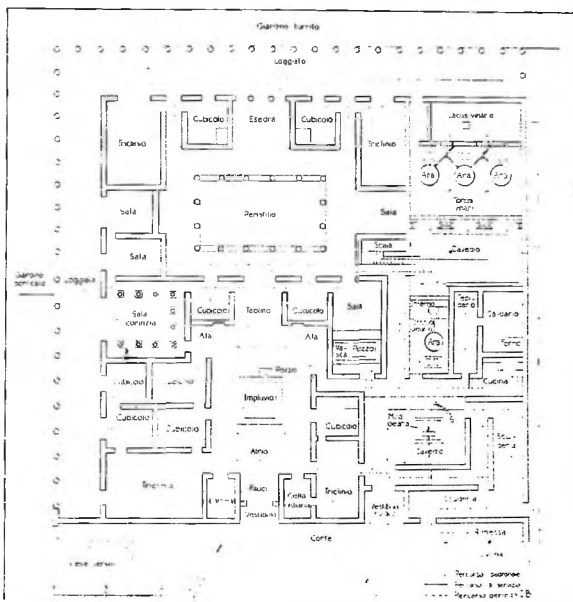


Fig. 95 - Idem. Corpo central, planimetria interpretativa do período I (Carandini et alii, 1985, I, 2, fig. 97).

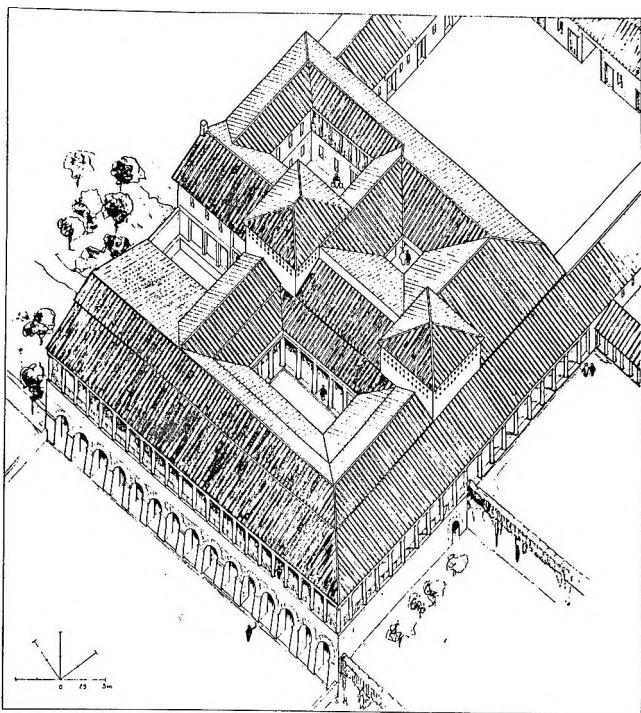


Fig. 96 - Idem. Reconstrução axonométrica do corpo central, visto de SW (Carandini et alii, 1985, I, I, fig. 149).

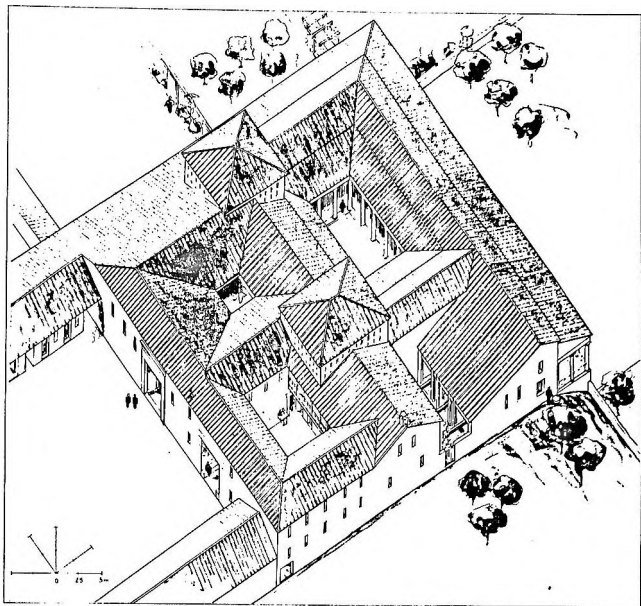


Fig. 97 - Idem. Reconstrução axonométrica do corpo central, visto de NE (Carandini et alii, 1985, I, 1, fig. 150).

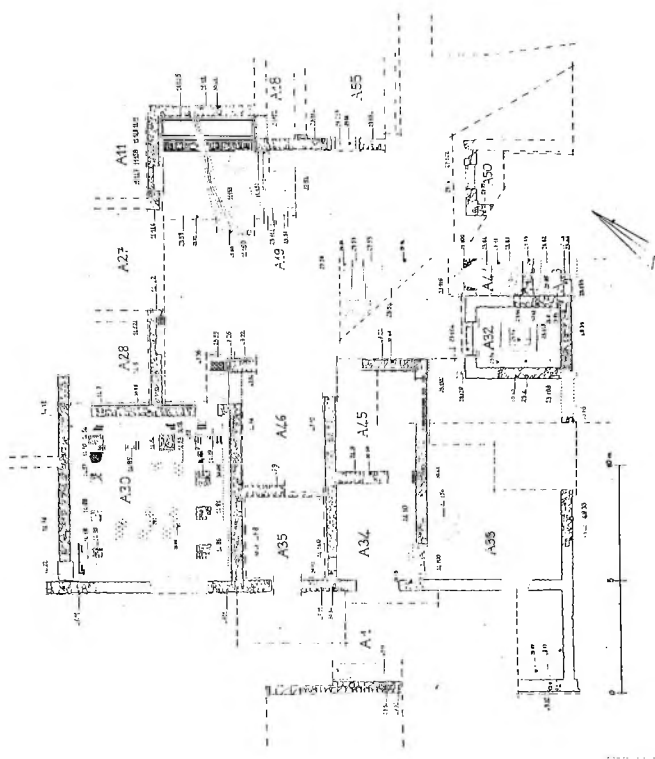


Fig. 98 - Idem. Planimetria do corpo central, área do átrio (Carandini et alii,1985,1,2, fig. 94).

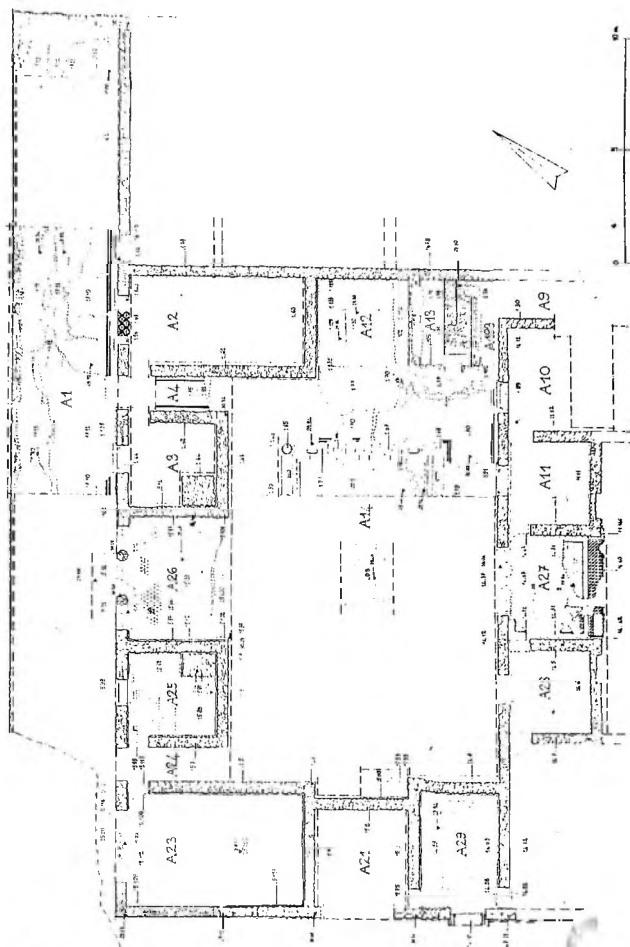


Fig. 99 - Idem. Planimetria do corpo central, área do peristílio (Carandini e ali, 1985, 12, fig. 95).



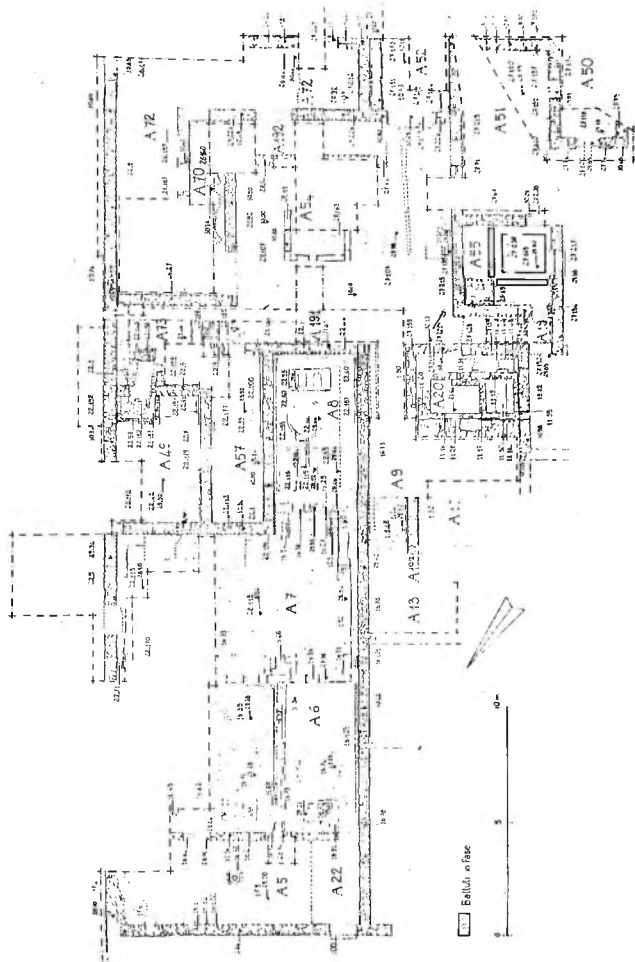


Fig. 100 - Idem. Planimetria do corpo central, área do atrilho e das prensas (Carandini et alii, 1985, 1, 2, fig. 96).

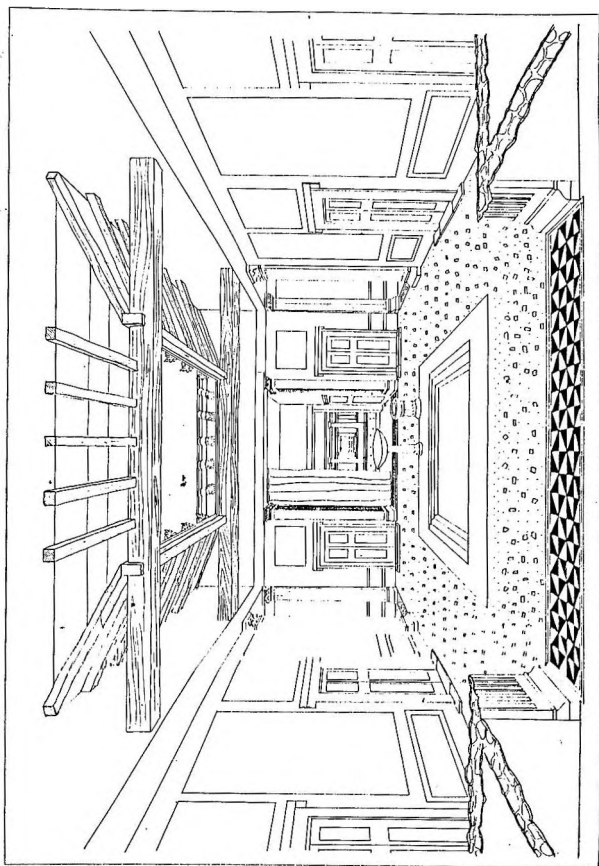


Fig. 101 - Idem. Reconstrução hipotética do átrio, visto da entrada (Carand. alii, 1985, 1, 2, fig. 35).

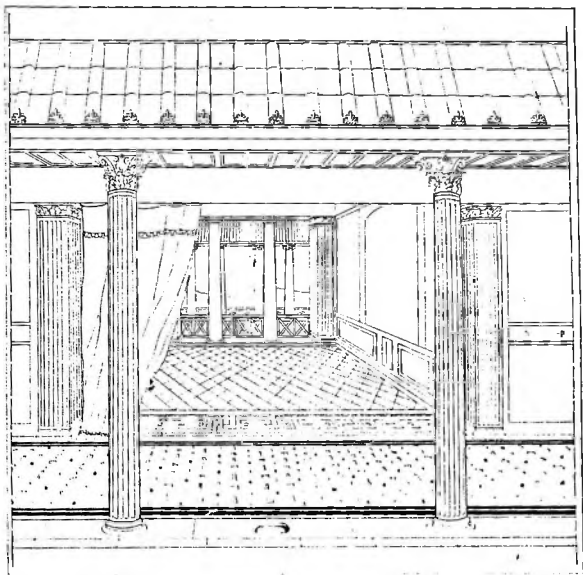


Fig. 102 - Idem. Reconstruco hipottica do Exedra, vista do peristilo (Carandina et alii, 1985, I, 2, fig. 88).

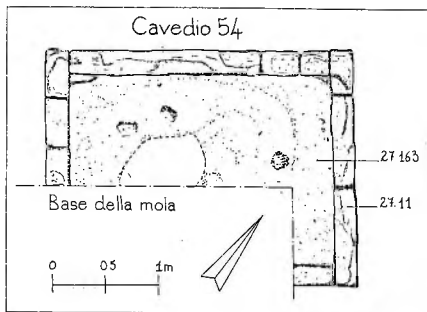


Fig. 103 - Idem. Tanque murado no atríolo 54 (Carandini et alii, 1985, 1, 2, fig. 34).

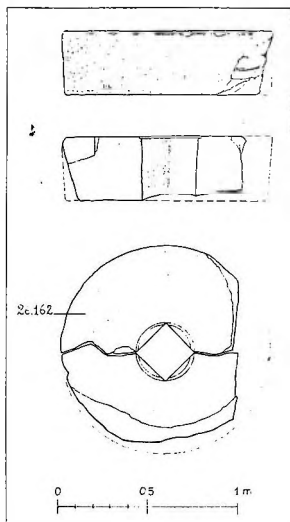


Fig. 104 - Idem. Mó para descorticar azeitonas (Carandini et alii, 1985, 1, 2, fig. 35).

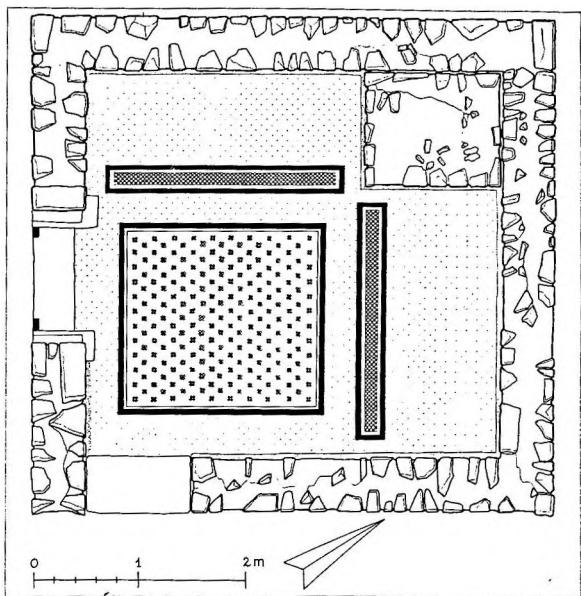


Fig. 105 - Idem. Planimetria reconstruída do ambiente 55 (Carandini et alii, 1985, I, 2, fig. 61).

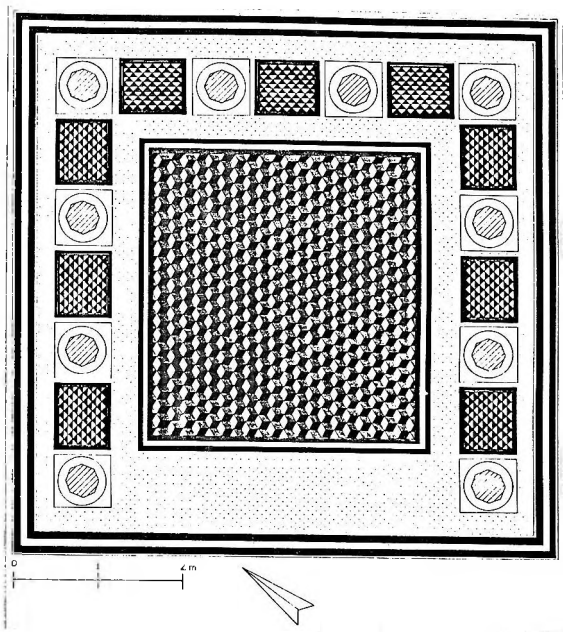


Fig. 106 - Idem. Planimetria reconstruída do ambiente 30 (Carandini et alii, 1985, I, 2, fig. 73).

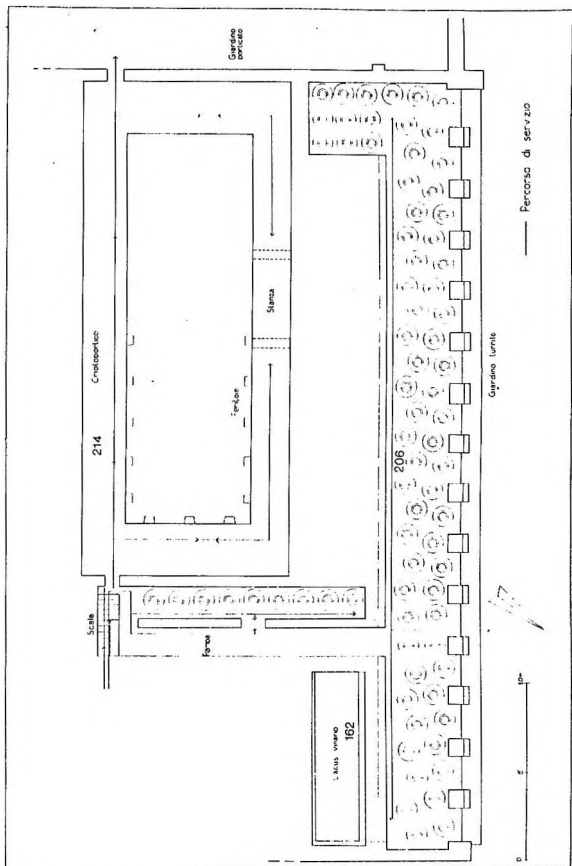


Fig. 107 - Idem. planimetria ricostruita dos ambientes sob o terraço (Carandini et alii, 1985, 1, 2, fig. 180).

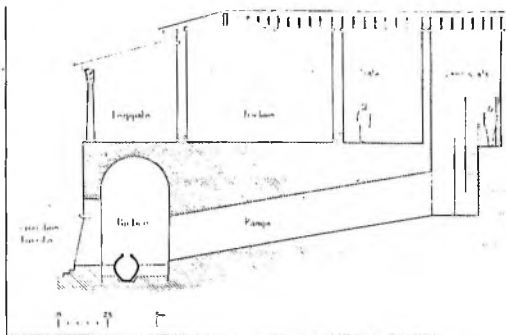


Fig. 108 - Idem. Sección W-E reconstruída do corpo central, à altura do pórtico (Carandini et alii, 1985, I, 2, fig. 173).

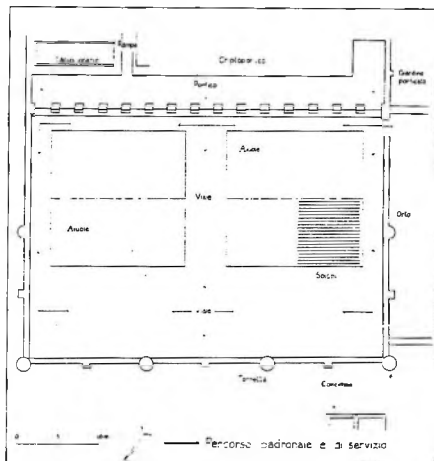


Fig. 109 - Idem. Planimetria interpretativa do jardim torreado (Carandini et alii, 1985, I, 2, fig. 208).



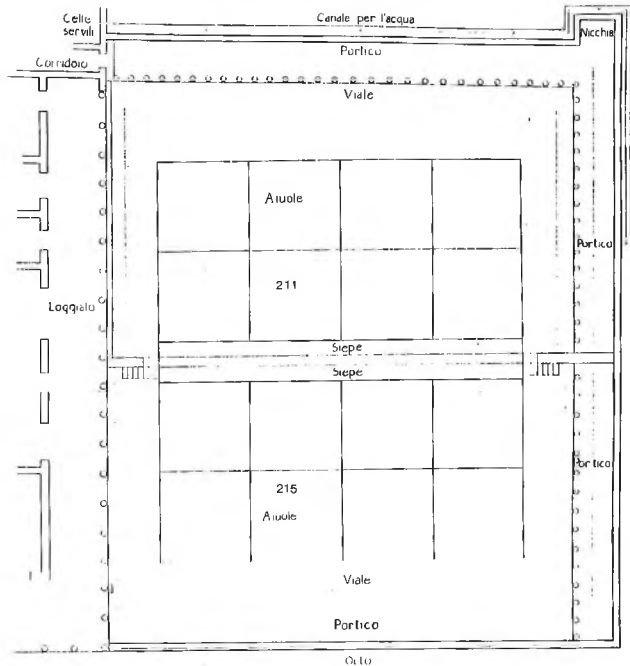


Fig. 110 - Idem. Planimetria interpretativa do jardim colonado (Carandini et alii, 1985, 1, 2, fig. 195).

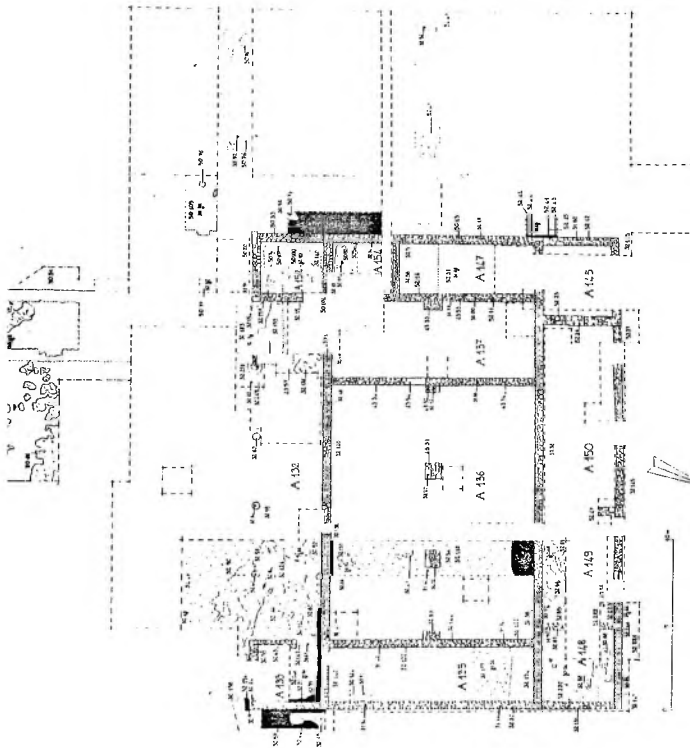


Fig. 111 - Idem. Planimetria do "celeiro" (Carandini et alii, 1985, 1, 2, fig. 298).

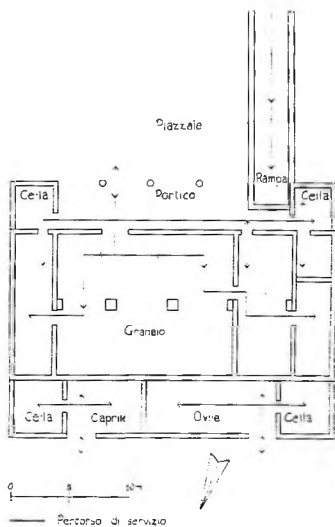


Fig. 112 - Idem. Planimetria interpretativa do celeiro, período I (Carandini et alii, 1985, 1, 2, fig. 301).

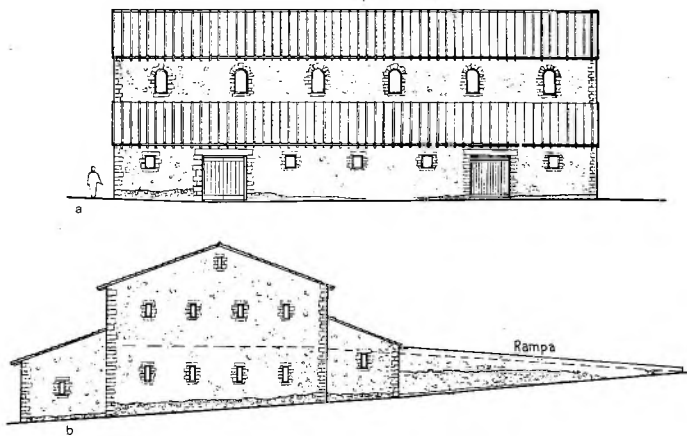


Fig. 113 - Idem. Reconstrução hipotética do "celeiro". a) face norte; b) face oeste (Carandini et alii, 1985, 1, 2, fig. 302).

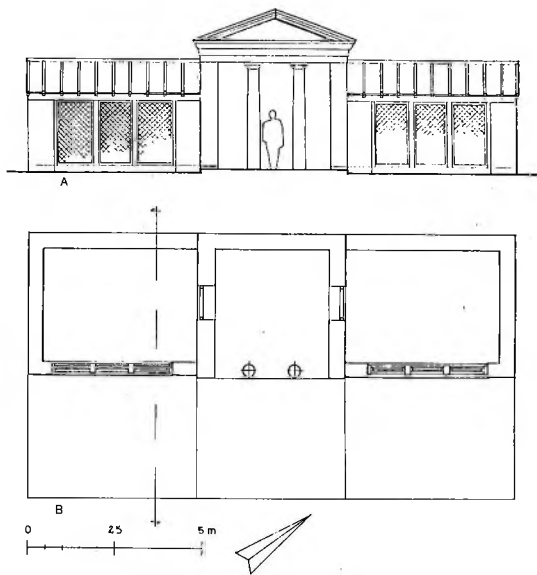
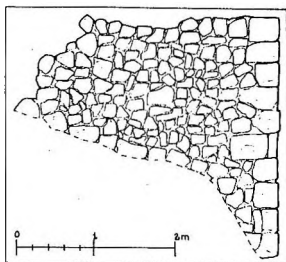
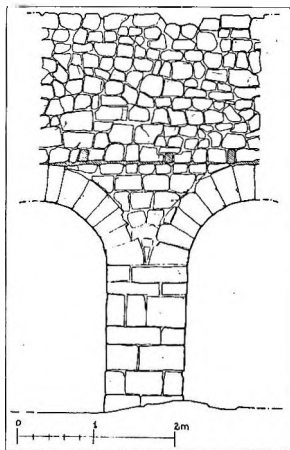


Fig. 114 - Idem. Belvedere. a) reconstrução; b) planta interpretativa (Carandini et alii, 1985, I, 2, fig. 308).



a



b

Fig. 115 - Idem. Detalhe das técnicas construtivas do período I. a) muro em obra incerta do corpo central; b) obra quadrada dos pilares do pórtico (Carandini et alii, 1985, I, 1, figs. 54 e 48).

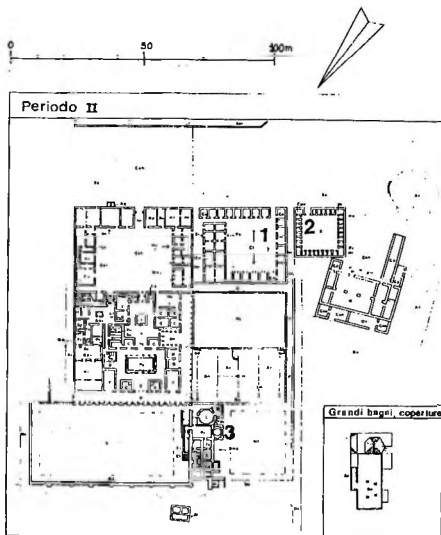


Fig. 116. Idem. Planimetria geral do sítio no período II (Carandini et alii, 1985, I, 1, fig. 139).

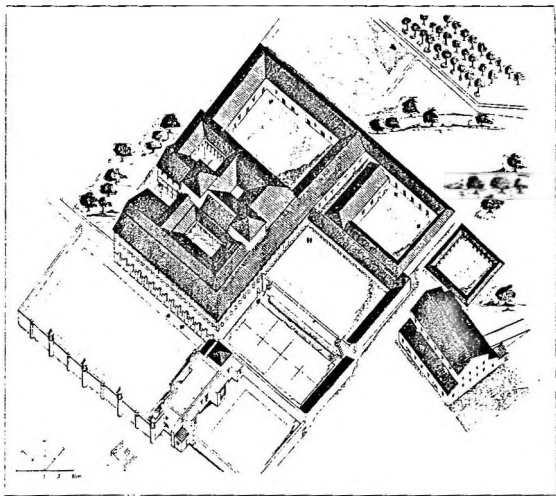


Fig. 117 - Idem. Reconstrução axonométrica do edifício no período II (Carandini et alii, 1985, I, 1, fig. 148).



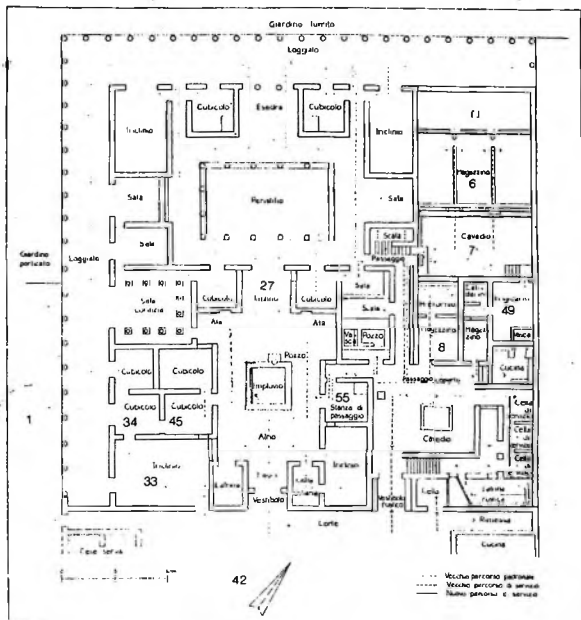
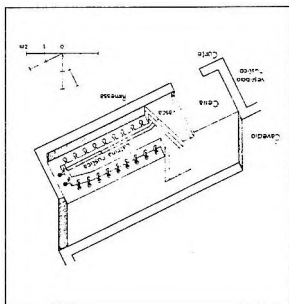


Fig. 118 - Idem. Planimetria interpretativa do corpo central no período II (Carandini et alii, 1985, I, 1, fig. 162).

Fig. 119 - Idem. reconstrução axonométrica da latrina (Carandini et alii, 1985, 12, fig. 120).



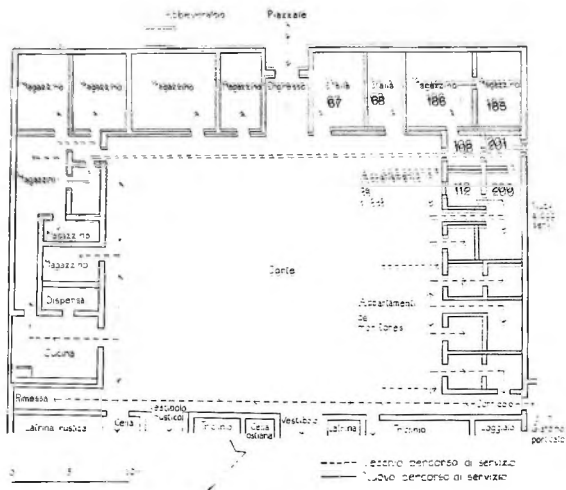


Fig. 120 - Idem. Planimetria interpretativa do pátio 42 no período II (Carandini et aln,1985,I,2, fig. 257).

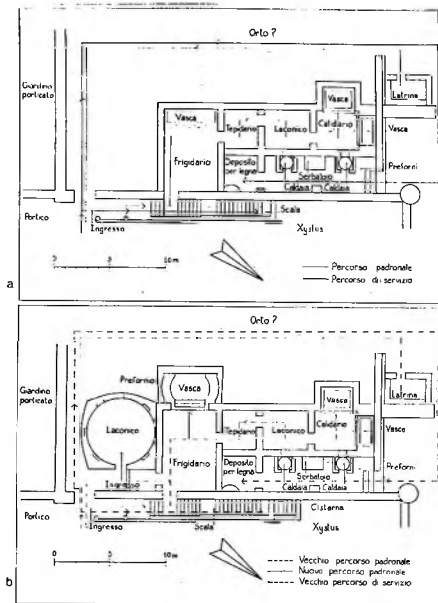


Fig. 121 - Idem. Planimetria interpretativa dos grandes banhos. a) instalação original; b) ampliação à época de adriano (Carandini et alii, 1985, I, 1, figs. 164 e 1650.

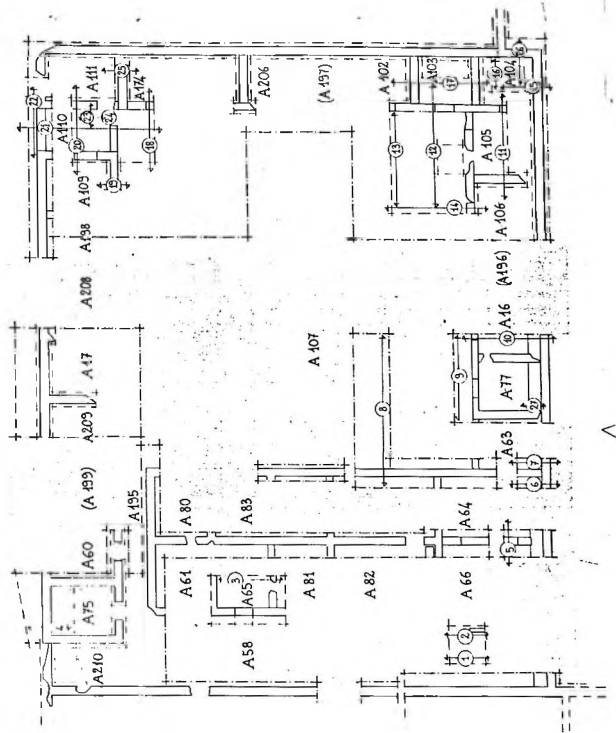


Fig. 122 - Idem. Novos "alojamentos servis". Plano das trincheiras e numeração dos ambientes (Carandini et alii, 1985, 1, 2, fig. 273).

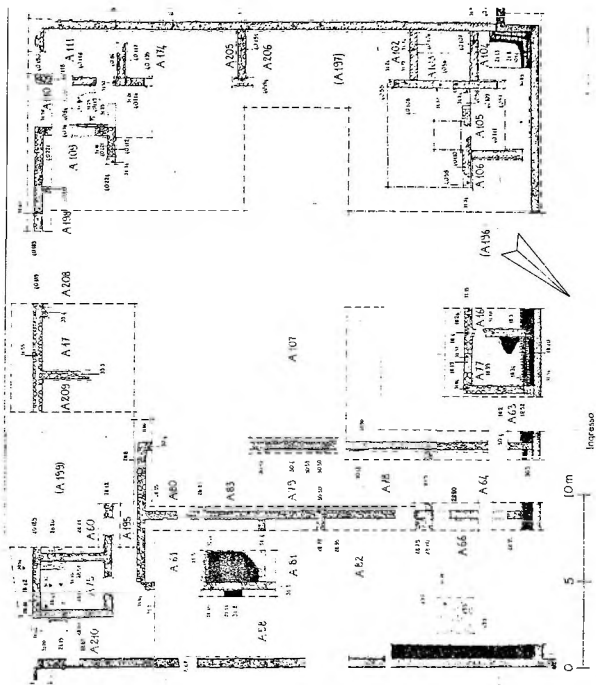


Fig. 123 - Idem. Planimetria dos novos "alojamentos servis" (Carandini et alii,1985,I,2, fig. 274a).

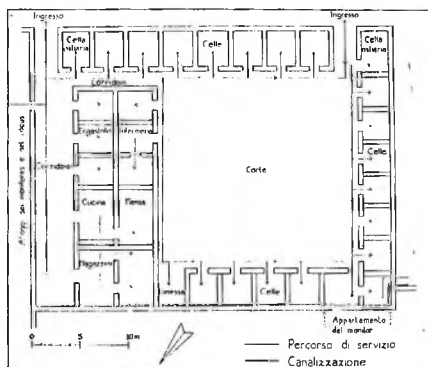


Fig. 124 - Idem. Planimetria interpretativa dos novos "alajamentos servis", período IIA1 (Carandini et alii, 1985, I, 2, fig. 274b).

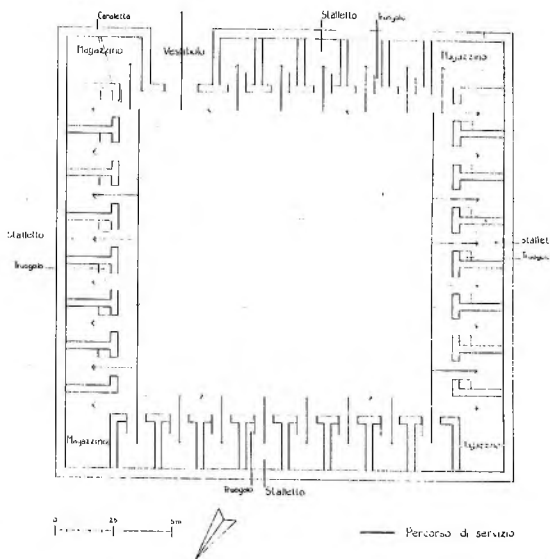


Fig. 125 - Idem. Planimetria interpretativa dei porci, periodo IIA1 (Carandini et alii, 1985, I, 2, fig. 283).



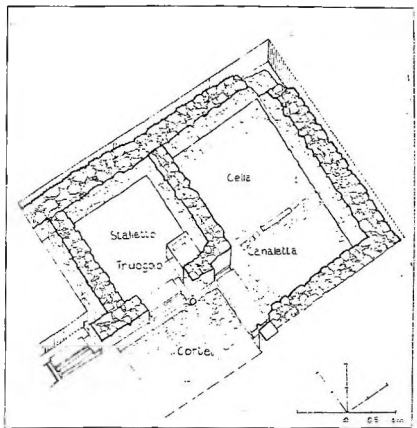
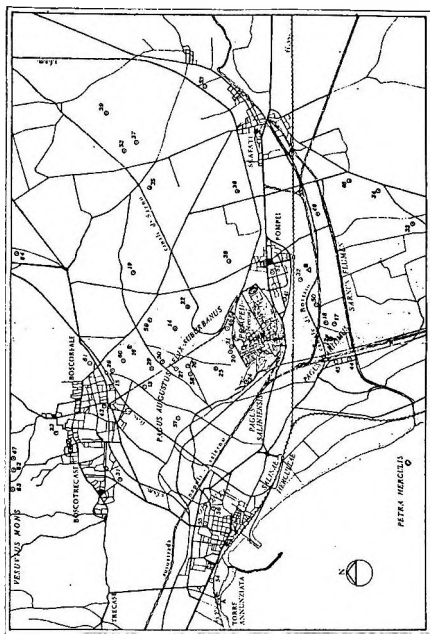


Fig. 126 - Idem. reconstrução axonométrica do ângulo SE do porcil (Carandini et alii, 1985, I, 2, fig. 282).



B. D. - Agrippa Boreas e. Agrippa Boreas

Fig. 127 - Campânia. Distribuição dos sítios rurais do território de Pompéia. Numeração segundo rostovtzeff até 40. 55 - uilla de Oplontis; 56 - uilla de L. Crassus Tertius (Prel 1981).

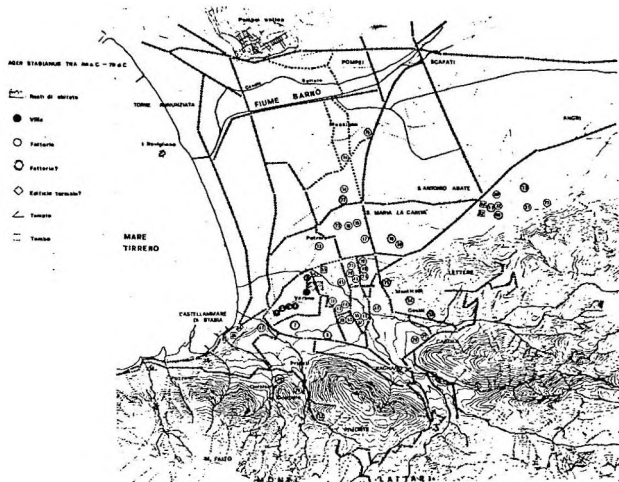


Fig. 128 - Idem. Mapa arqueológico do *ager stabianus* entre 89 a.C. e 79 d.C. (miniero, 1989, fig. 38).

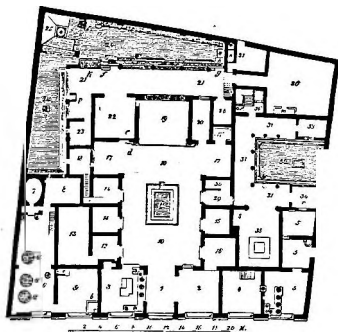


Fig. 129 - Pompéia. Casa de Salústio (VI,2,4). 10) átrio; 19) tablino; 21) pórtico (Mau,1900, fig. 135).

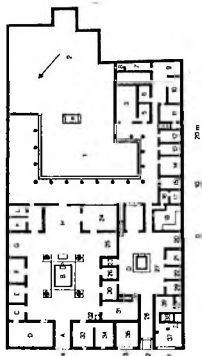


Fig. 130 - Idem. Casa de M. Obellius Firmus (IX,14,4) (Vos,1982:220).

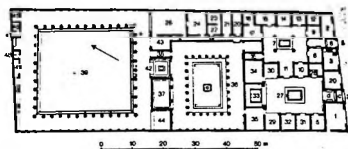


Fig. 131 - Idem. casa do Fauno (VI,12,2) (Vos,1982:162).

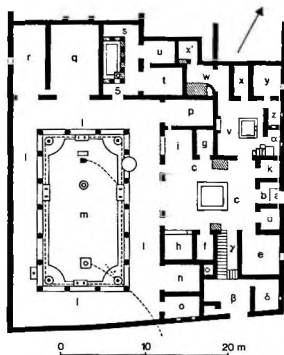


Fig. 132 - Idem. Casa dos Vetti (VI,15,7) (Vos,1982:168).

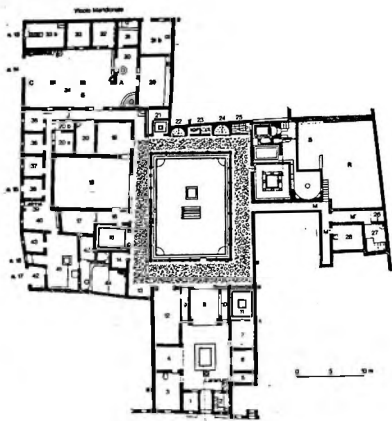


Fig. 133 - Idem. Casa del Menandro (I,10,4) (Vos,1982:91).

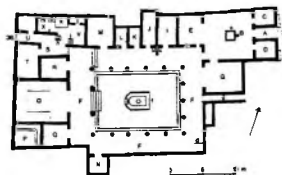


Fig. 134 - Idem. Casa degli Amorini Dorati (VI,16,7) (Vos,1982:181).

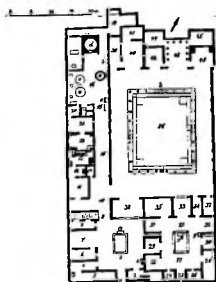
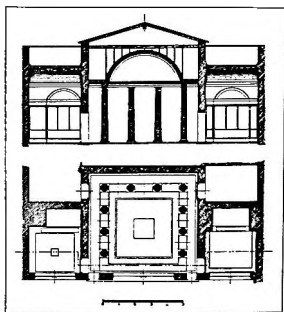


Fig. 135 - Idem. Casa do Centenário (IX,8,6) a) planimetria geral; b) reconstrução do ambiente 43 (Mau, 1900).



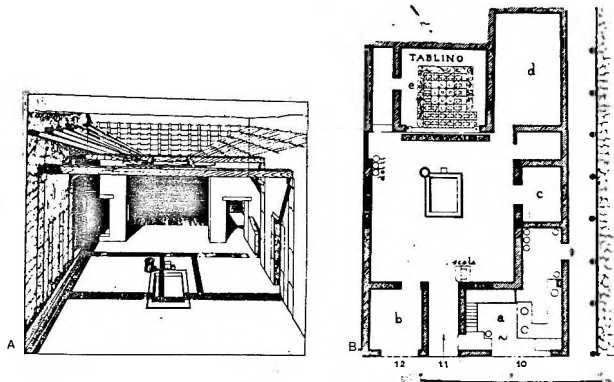


Fig. 136 - Herculano. Casa anônima a) reconstrução axonométrica do átrio; b) planimetria geral (Vos,1982:291).

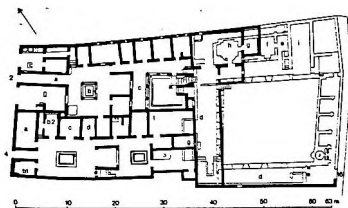


Fig. 137 - Pompéia. Casa do Criptopórtico (1,6,2-4) (Vos,1982:105).



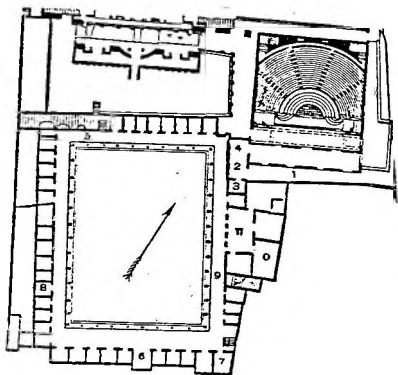


Fig. 138 - Idem. Caserma dos gladiadores (Mau, 1900, fig. 71).

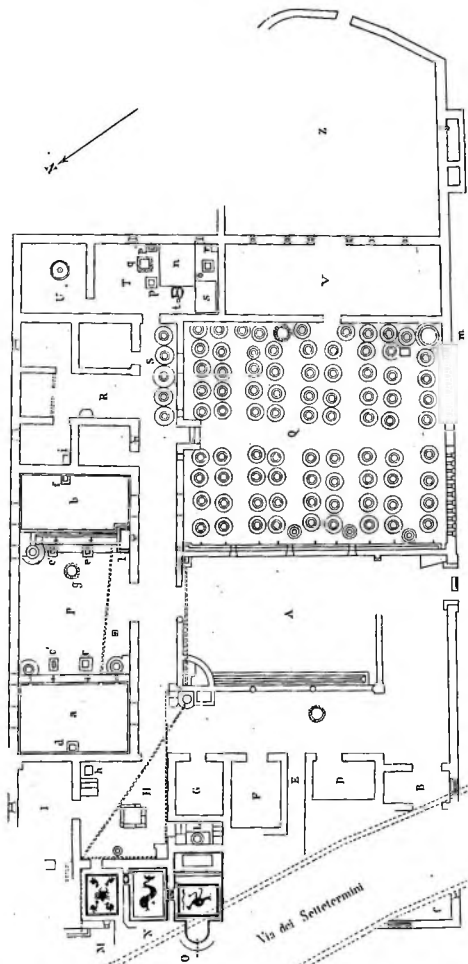


Fig. 139 - Idem. Edificio de Pisanella (R-13) (Pasqui, 1897, tav. XIV).

Scala da 1:200

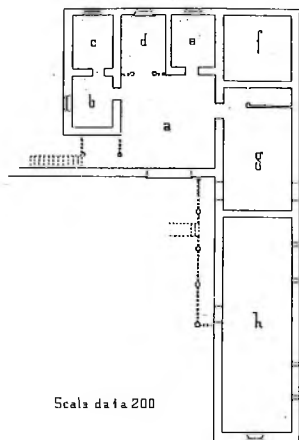


Fig. 140 - Idem. Edificio de Pisanella, planimetria do segundo piso (Pasqui, 1897, fig. 74).

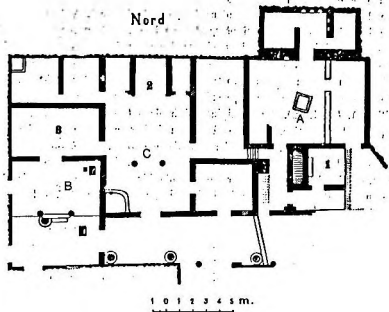


Fig. 141 - Idem. Edificio de Centopiedi al Tirone (R-22) (Paribeni,1903)

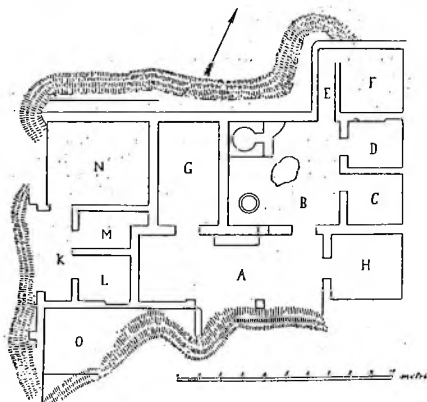


Fig. 142 - Idem. Edificio de Setari (R-23) (Sogliano,1899).

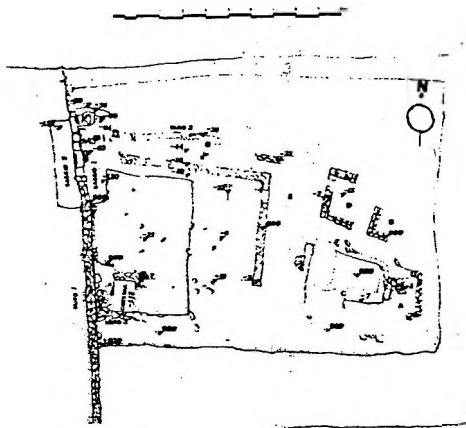


Fig. 143 - Stabiae. Sítio de Gagnano, f. 10, part. 21 (Miniero, 1987, fig. 73).

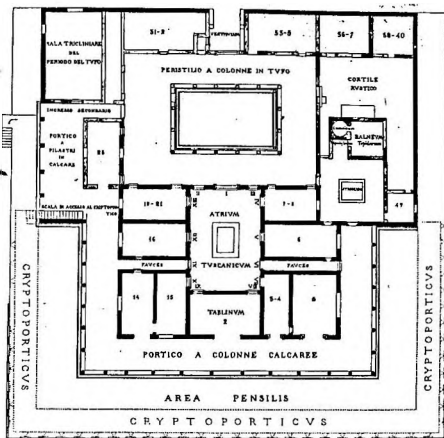


Fig. 144 - Pompéia. Villa dei Misteri. Planimetria reconstruída do edifício do século II a.C. (Maiuri, 1931, tav. B).

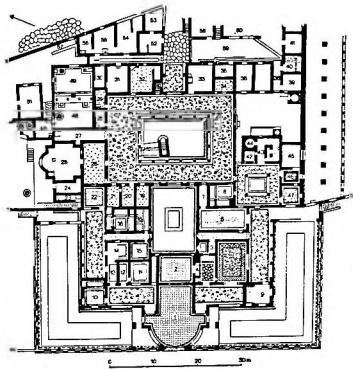


Fig. 145 - Idem. villa dei Misteri. Planimetria do edificio na fase final (Maiuri,1931, tav. A).

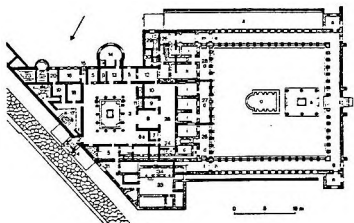
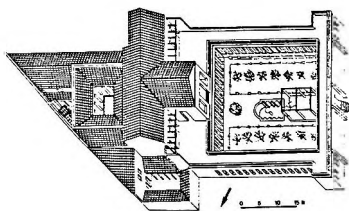


Fig. 146 - idem. Villa de Diomede a) Planimetria geral; b) reconstrução (Vos,1982:241).





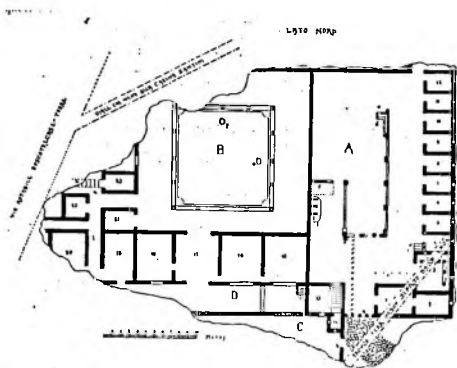


Fig. 147 - Idem. Boscotrecase, contrada Rota, uilla de T. Claudius Eutychus ou de Agrippa Postumus (R-31) (Della Corte, 1922, fig. 1).

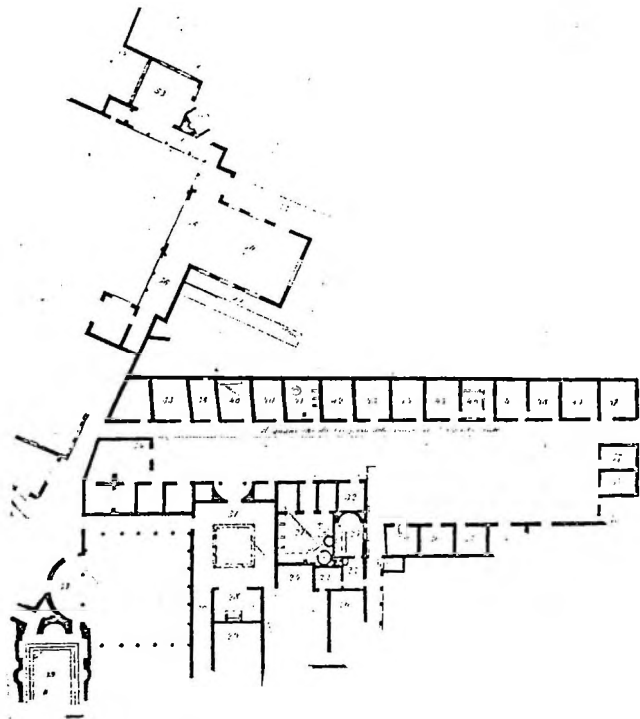


Fig. 148 - Stabiae. Villa del Pastore (Ruggiero, 1881, tav. III).

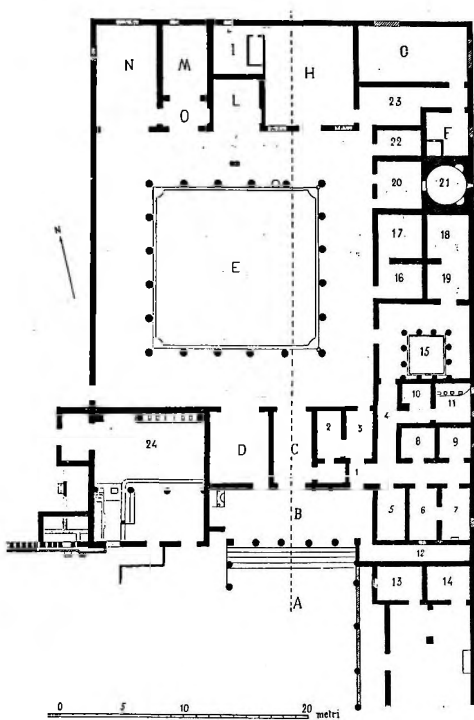


Fig. 149 - Pompéia. Boscoreale. Villa de Publius Fannius Synistor (R-16) (Barnabei, 1901, tav. 2).

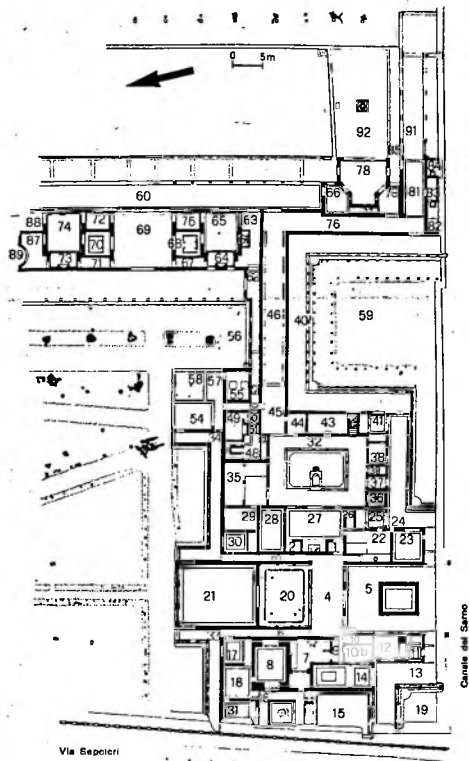


Fig. 150 - Torre Annunziata, edificio de Oplontis (Vos,1982:251).

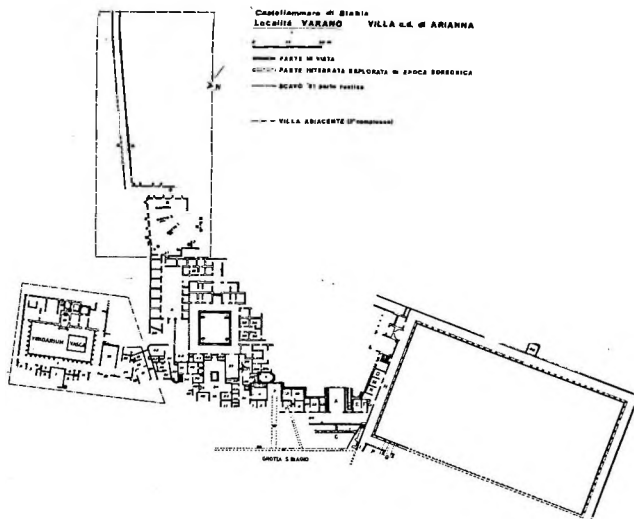


Fig. 151 - Stabiae. Colina de varano. Villa de Arianna e edificio adjacente (Miniero, 1987, fig. 1).

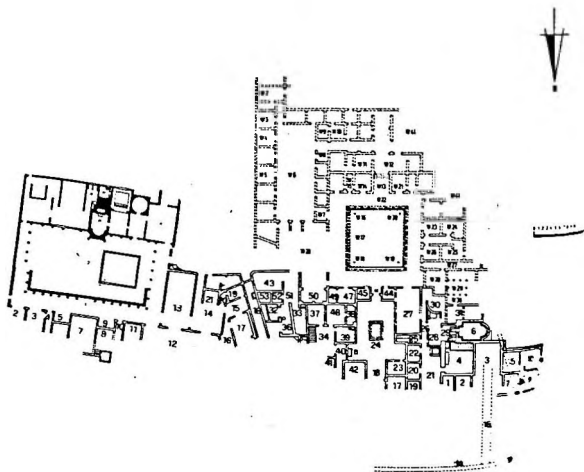


Fig. 152. Idem. Villa de Arianna. detalhe do corpo central (Ruggiero,1881, tav. IV e V).

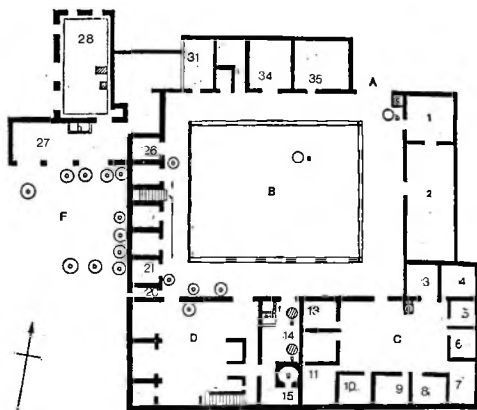


Fig. 153 - pompéia. Edifício de Gragnano, Carità (R-34) (White, 1970, fig. 10).

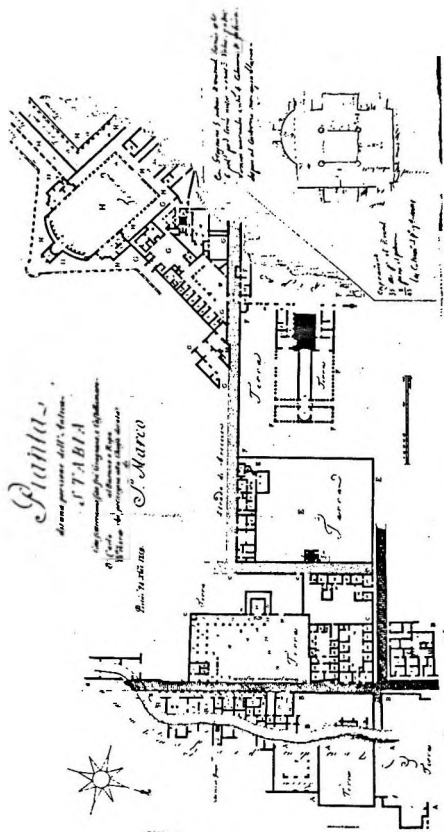


Fig. 154 - Stabiae. Planimetria dos edificios contíguos à Villa de S. Marcos (G e H)



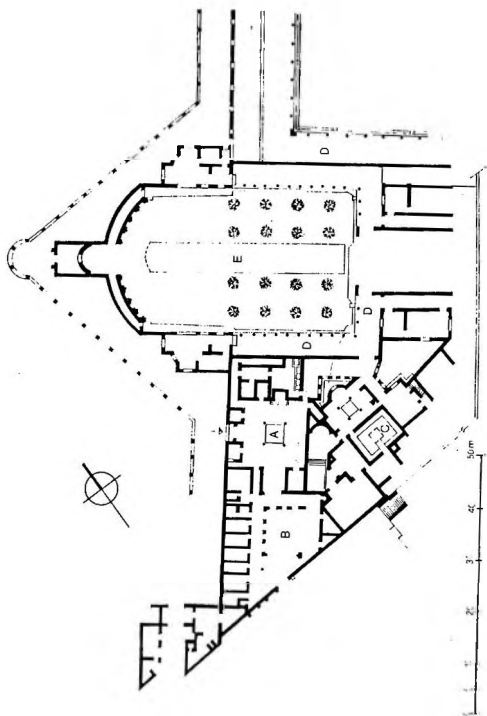


Fig. 155 - Idem. Villa de S. Marcos (D'Arms,1984).

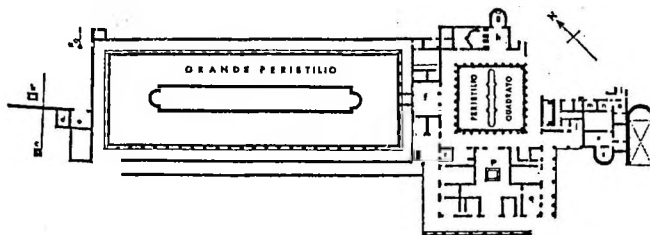


Fig. 156 - Herculano. Villa dei Papiri (Mackay, 1975, fig. 42).

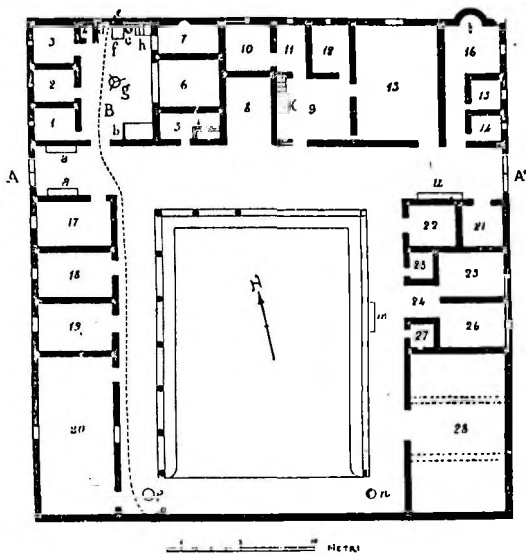


Fig. 157 - Pompéia. Boscoreale, edificio de Asellius (R-27) (Della Corte, 1921, fig. 7).

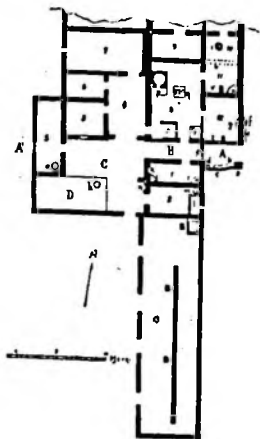


Fig. 158 - Idem. Boscoreale, edificio do Fondo d'Acunzo (R-28) (Della corte,1921, fig. 9).

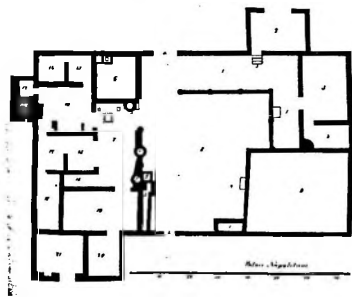


Fig. 159 - Stabiae. Edificio da localidade Carmiano (Ruggiero,1881, tav. XVII).

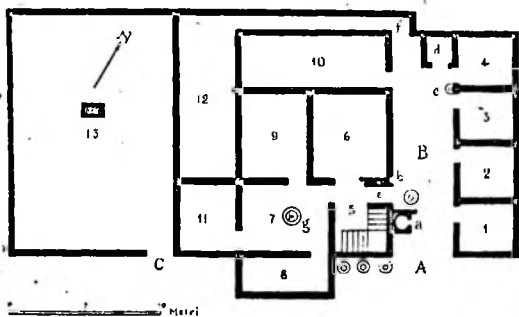


Fig. 160 - Pompéia. Boscoreale, edificio do Fondo Raffaele Brancaccio (R-26) (Della Corte, 1921, fig. 5).

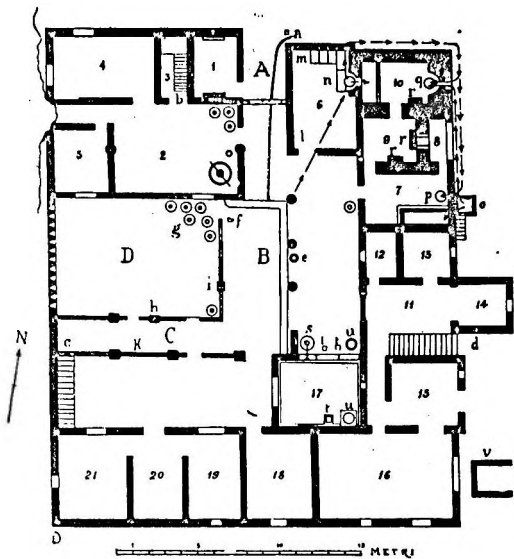


Fig. 161 - Idem. Boscoreale, edificio de contrada pisanella (R-29) (Della Corte,1921, fig. 12).

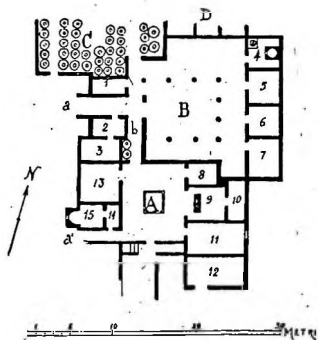


Fig. 162 - Idem. Edificio de contrada MESSIGNO (R-33) (Della Corte, 1923, fig. 1).

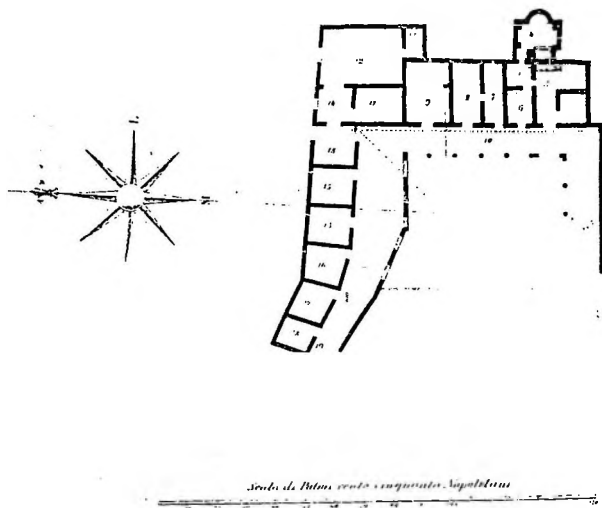


Fig. 163 - Stabiae. Edificio de Casa di Miri (Ruggiero, 1881, tav. IX).





Fig. 164 - Pompéia. Scafati, edifício do Fondo Matrone (R-35) (Della Corte, 1923, fig. 5).

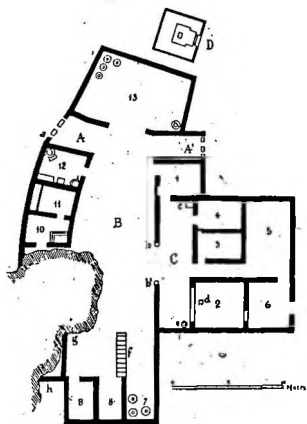


Fig. 165 - Idem. Edificio de contrada Civita Giuliana, Fondo A. Prisco (R-25) (Della Corte, 1921, fig. 1).

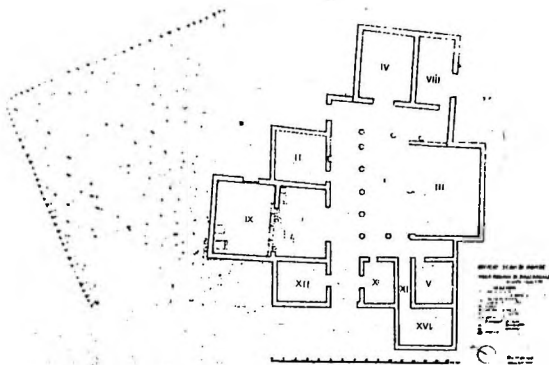


Fig. 166 - Idem. Boscoreale, edificio de Villa Regina (De Caro, 1981, tav. LX).



Fig. 167 - Stabiae. Edifício de Petrellune (Ruggiero,1881, tav. X2).

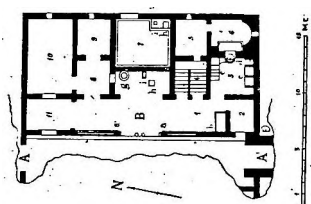


Fig. 168 - Pompéia. Boscoreale, edifício do Fondo Agricultura (R-30) (Della Corte,1921, fig. 12).

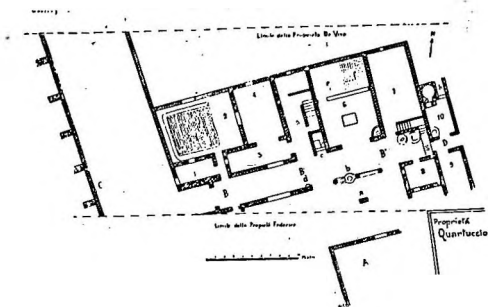


Fig. 169 - Idem. Edificio de contrada Minutella (R-40) (Della Corte, 1929, fig. 1).

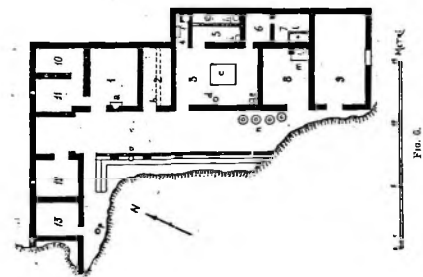


Fig. 170 - Idem. Edificio de scafati, contrada Ciapolla (R-36) (Della Corte, 1923, fig. 6).

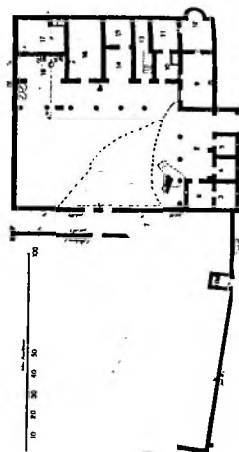
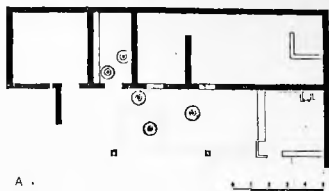


Fig. 171 - stabiæ. Edificio de contrada Sassola (Ruggiero,1881, tav. XIV).



A .

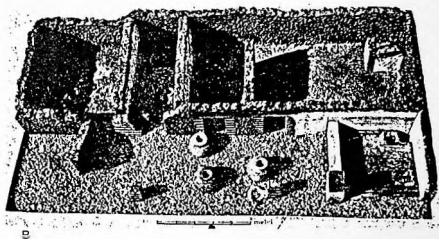


Fig. 172 - Pompéia. Boscoreale, uilla de N. Livii Marcelli (R-38) a) planimetria reconstruïda; b) maquete (Casale & Bianco, 1979, fig. D e Della Corte, 1929, fig. 1).

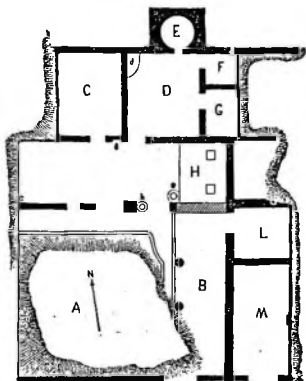


Fig. 173 - Idem. Boscoreale, edificio de Piazza Mercato (R-15) (Sogliano,1898).



S. MARIA LA CARITÀ  
 17 metri 420

LEGGENDA

- 1 - Stipo
- 2 - Muro esterno
- 3 - Muro del cortile
- 4 - Muro
- 5 - Muro
- 6 - Muro
- 7 - Muro
- 8 - Muro
- 9 - Muro
- 10 - Muro
- 11 - Muro
- 12 - Muro
- 13 - Muro
- 14 - Muro
- 15 - Muro
- 16 - Muro
- 17 - Muro
- 18 - Muro
- 19 - Muro
- 20 - Muro
- 21 - Muro
- 22 - Muro
- 23 - Muro
- 24 - Muro
- 25 - Muro
- 26 - Muro
- 27 - Muro
- 28 - Muro
- 29 - Muro
- 30 - Muro
- 31 - Muro
- 32 - Muro
- 33 - Muro
- 34 - Muro
- 35 - Muro
- 36 - Muro
- 37 - Muro
- 38 - Muro
- 39 - Muro
- 40 - Muro
- 41 - Muro
- 42 - Muro
- 43 - Muro
- 44 - Muro
- 45 - Muro
- 46 - Muro
- 47 - Muro
- 48 - Muro
- 49 - Muro
- 50 - Muro
- 51 - Muro
- 52 - Muro
- 53 - Muro
- 54 - Muro
- 55 - Muro
- 56 - Muro
- 57 - Muro
- 58 - Muro
- 59 - Muro
- 60 - Muro
- 61 - Muro
- 62 - Muro
- 63 - Muro
- 64 - Muro
- 65 - Muro
- 66 - Muro
- 67 - Muro
- 68 - Muro
- 69 - Muro
- 70 - Muro
- 71 - Muro
- 72 - Muro
- 73 - Muro
- 74 - Muro
- 75 - Muro
- 76 - Muro
- 77 - Muro
- 78 - Muro
- 79 - Muro
- 80 - Muro
- 81 - Muro
- 82 - Muro
- 83 - Muro
- 84 - Muro
- 85 - Muro
- 86 - Muro
- 87 - Muro
- 88 - Muro
- 89 - Muro
- 90 - Muro
- 91 - Muro
- 92 - Muro
- 93 - Muro
- 94 - Muro
- 95 - Muro
- 96 - Muro
- 97 - Muro
- 98 - Muro
- 99 - Muro
- 100 - Muro

N.B. Gli ambienti C, F, G, H, I sono  
 stati restaurati nel 1989

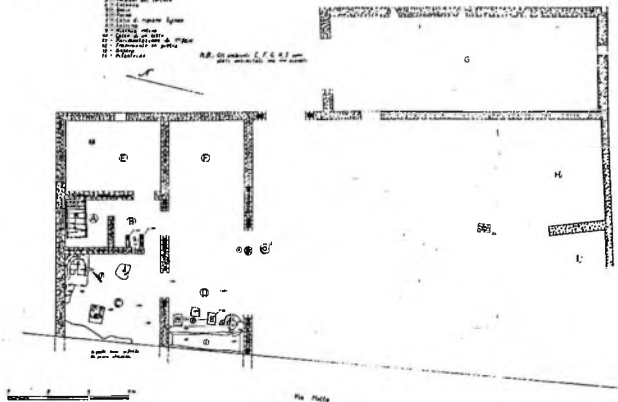


Fig. 174 - Stabiae. Edificio de S. Maria la Carità (Miniero, 1989, fig. 43).

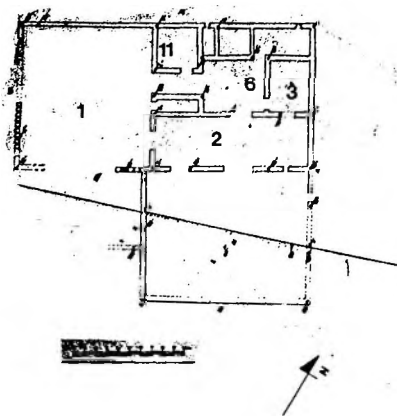


Fig. 175 - Idem. Gragano, f. 9, part. 338-14 (Miniero, 1987, fig. 71).

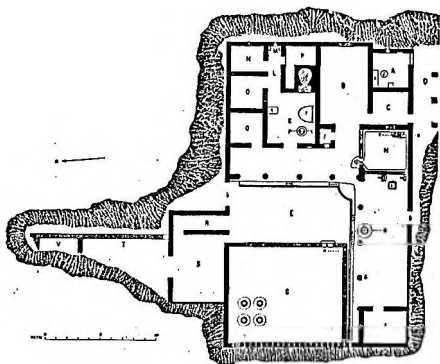


Fig. 176 - Pompéia. Boscoreale, edificio de contrada Giuliana (R-14) (Sogliano,1897, fig. 1).

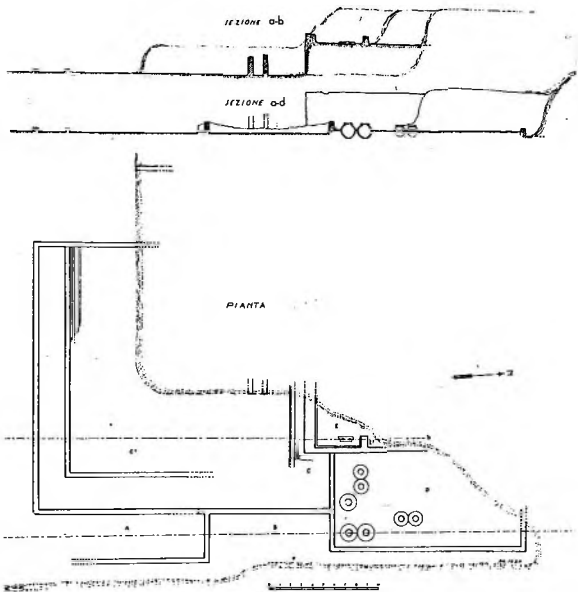


Fig. 177 - S. Sebastiano al Vesúvio. Planimetria da área escavada (Cerulli Irelli, 1965, fig. 2).

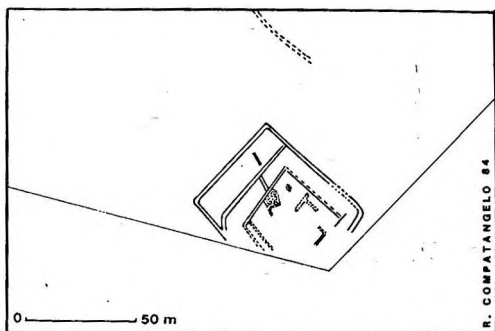


Fig. 178 - campânia. Casal Crescione. Interpretação dos vestígios identificados por aerofotogrametria (Compatangelo, 1986, fig. 10).

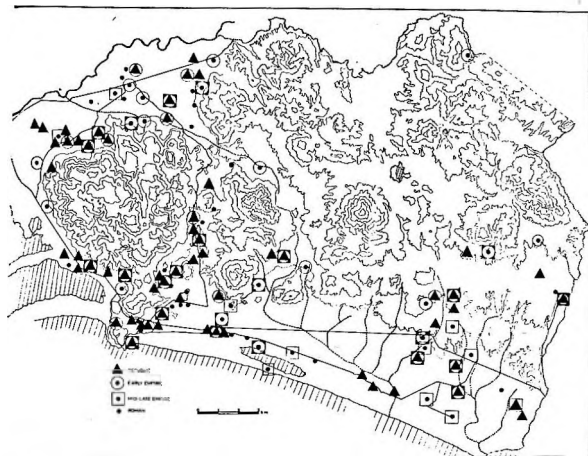


Fig. 179 - Cosa. Mapa de distribuição dos sítios de época romana (Dyson, 1979).

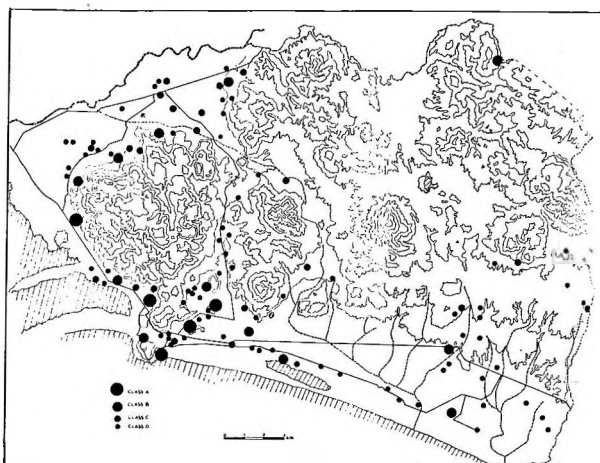


Fig. 180 - Cosa. Tipologia dos sítios romanos (Dyson,1979).

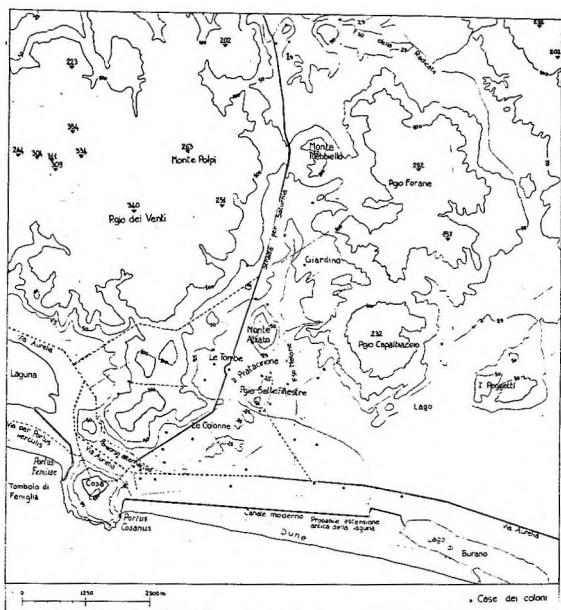


Fig. 181 - Cosa, vale do rio Oro. Mapa de distribuição dos sítios rurais no II a.C. (Celuzza & Regoli, 1985, I, 1, fig. 37).



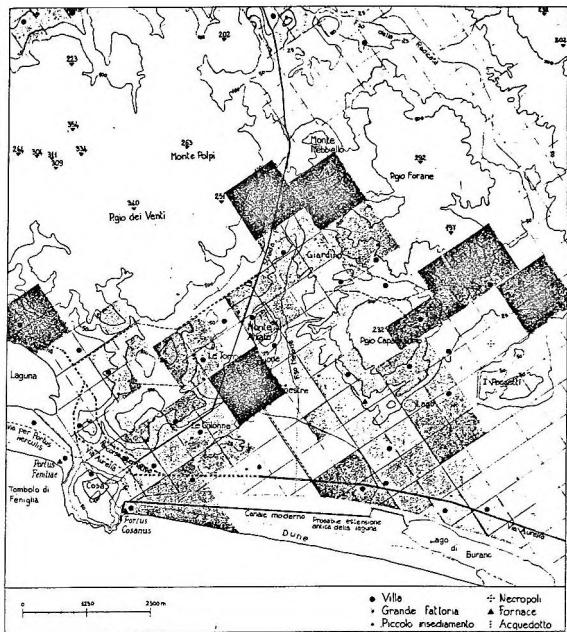


Fig. 182 - Idem. Distribuição dos sítios rurais entre I a.C. e I d.C. (Celuzza & Regoli, 1985, I, 1, fig. 39).

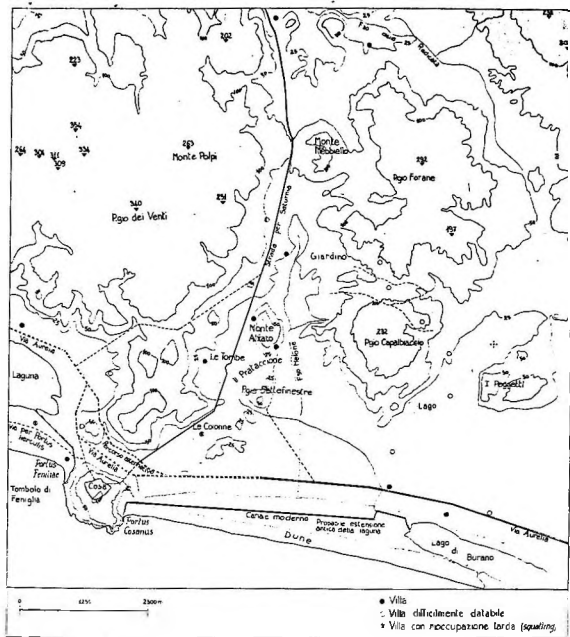


Fig. 183 - Idem. Distribuição dos sítios rurais após III d.C. (Celuzza & Regoli, 1985, I, 1, fig. 42).

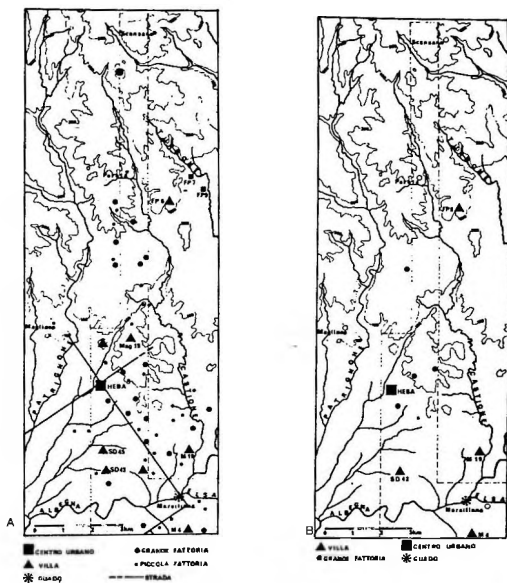


Fig. 184 - Heba, curso superior do rio Albegna. Distribuição dos sítios rurais romanos. a) II a.C. - II d.C.; b) III d.C. - VI d.C. (Attolini et alii, 1983, figs. 14-15).



Fig. 185 - Satúrnia. Distribuição dos sítios rurais romanos (Dyson, inédito).

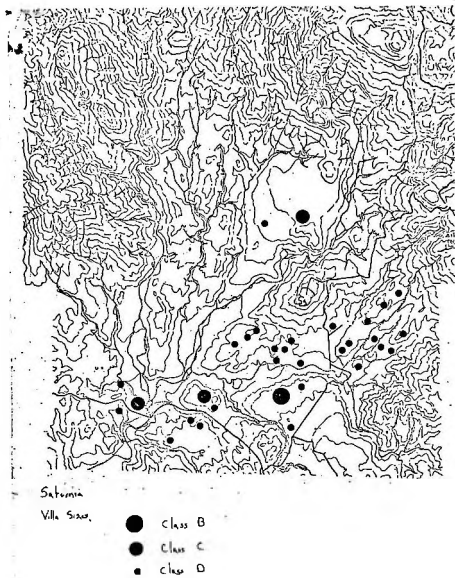


Fig. 186 - Idem. Tipologia dos sítios rurais (Dyson, inédito).

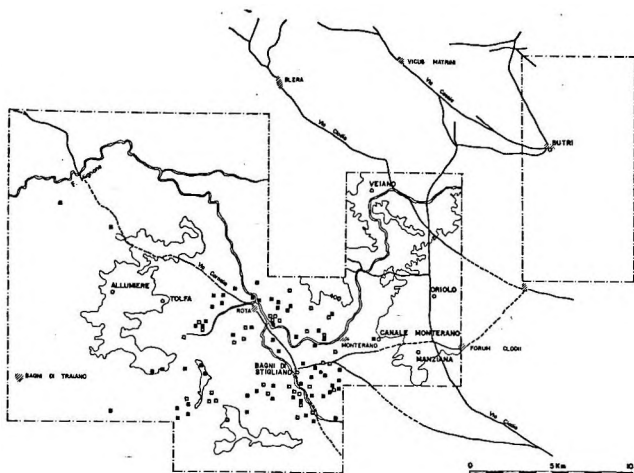


Fig. 187 - Etrúria meridional, região dos Bagni di Stigliano. Distribuição dos sítios rurais romanos (Gazzetti et alii, 1985, fig. 7).

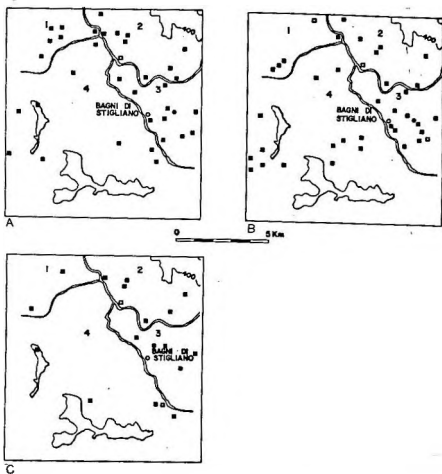
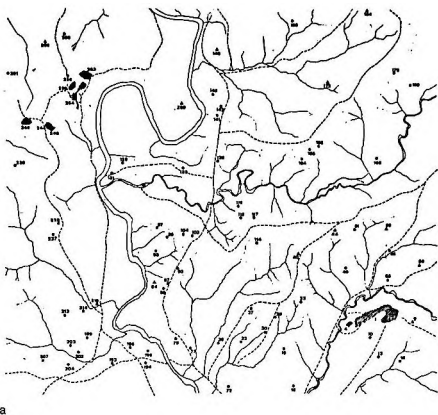
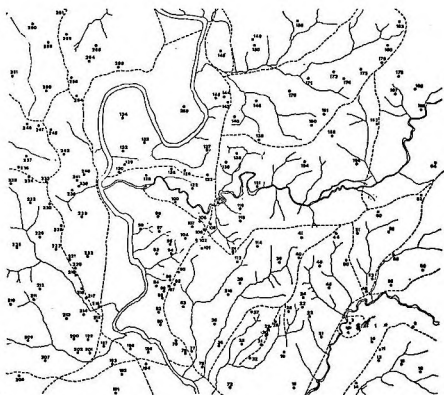


Fig. 188 - Idem. Arredores de bagni di Stigliano. a) sítios de meados do III a.C.; b) sítios de meados do I a.C.; c) sítios de meados do III a.C. (Gazzetti et alii, 1985, figs. 4-6).



a



b

Fig. 189 - Cures Sabini. a) Distribuição dos sítios rurais romanos nos períodos arcaico e republicano; b) 30 a C - II d C (Muzzioli 1980 figs 10-11)



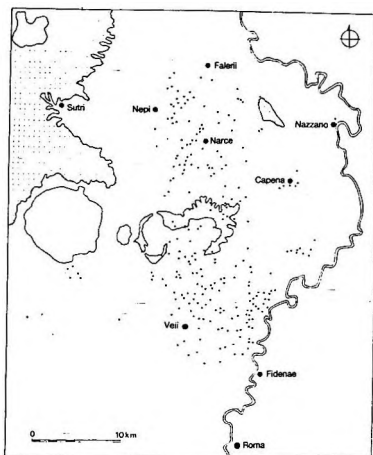


Fig. 190 - Etrúria meridional. Região ao norte de Veios. Distribuição dos sítios rurais nos séculos VII e VI a.C. (Potter, 1985, fig. 21).

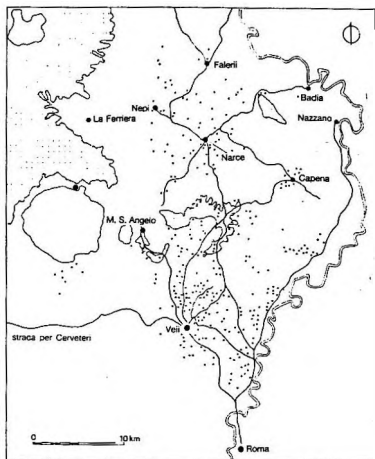


Fig. 191 - Idem. Sítios dos séculos V e IV a.C. (Potter, 1985, fig. 25).

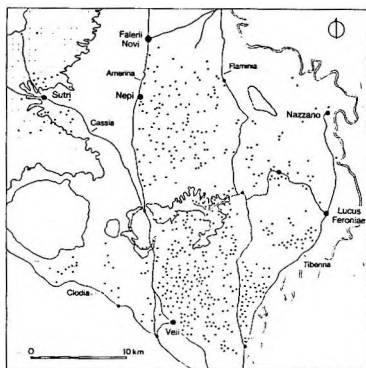


Fig. 192 - Idem. Sítios do período republicano (Potter, 1985, fig. 27).

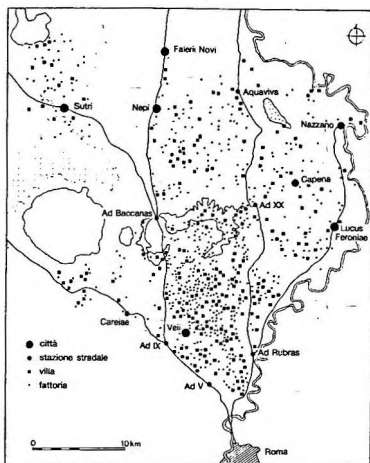


Fig. 193 - idem. Sítios de 100 d.C. (Potter, 1985, fig. 35).

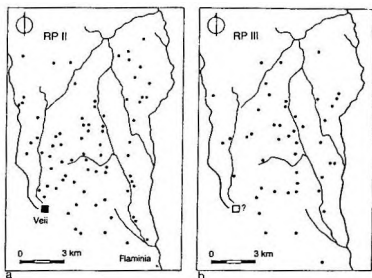


Fig. 194 - Idem. Sítios do Baixo-Império. a) 350 - 450 d.C.; b) 450-625 d.C. (Potter, 1985, fig. 40).



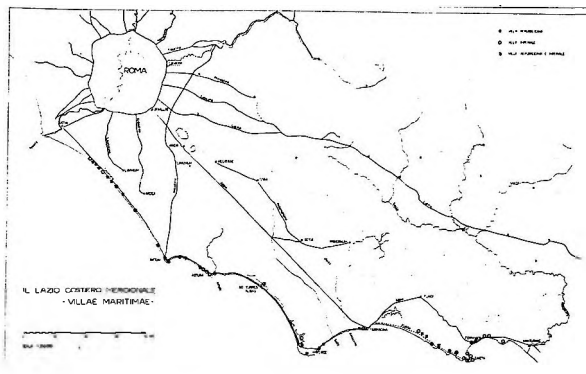


Fig. 196 - Lácio costeiro meridional. *Villae maritimae*. (Egidi, 1985, fig. 84).



Fig. 197 - Terracina. Reconstrução da centurição e sítios rurais dispostos segundo seus eixos (Longo, 1985, fig. 26).



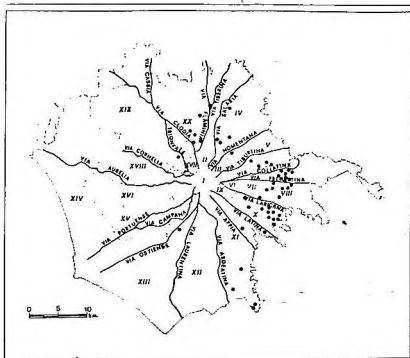


Fig. 198 - Subúrbio de Roma. Mapa de distribuição dos torculares (Bellini & Rea, 1985, fig. 85).

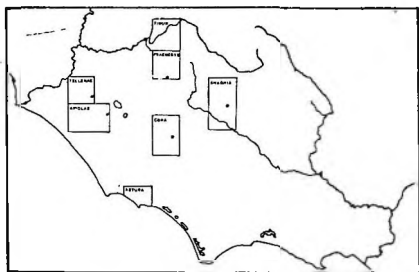


Fig. 199 - Lácio. Mapa das zonas estudadas por Andreussi (Andreussi,1981, tav. XIV).

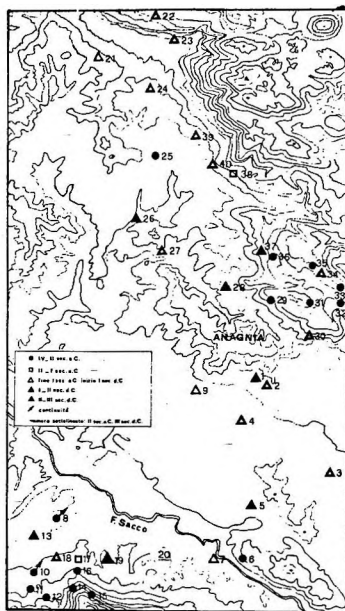


Fig. 200 - Idem. Anagnina, stitios rurais romanos (Andreussi, 1981, tav. XV).

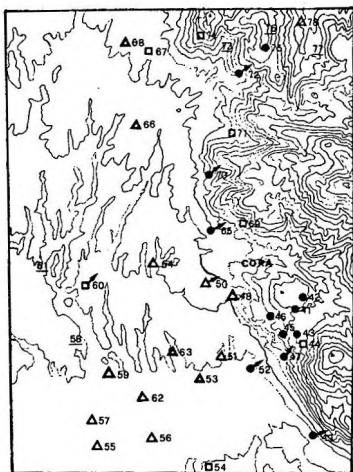


Fig. 201 - Cora, sítios rurais romanos (Andreussi, 1981, tav. XVI).

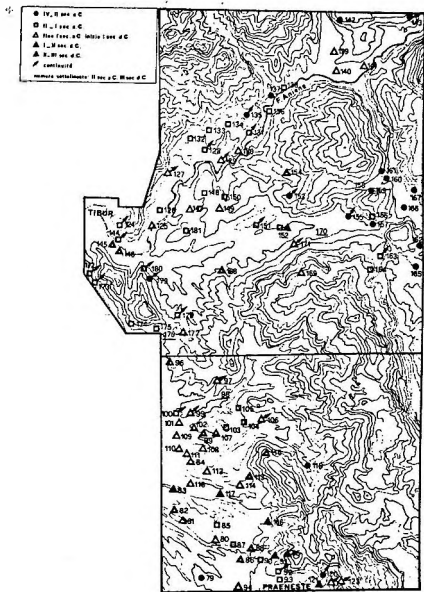


Fig. 202 - Idem. Preneste e Tibur, sítios rurais romanos (Andreussi, 1981, tav. XVII).

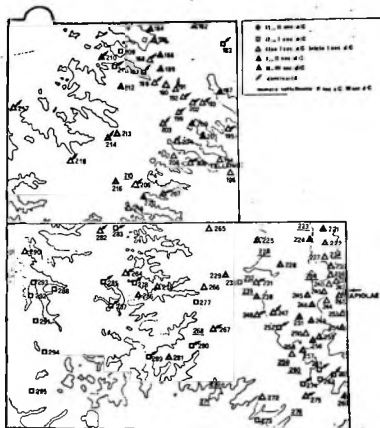


Fig. 203 - Idem. Tellene e Apiolae, sitios rurales romanos (Andreussi, 1981, tav. XVIII).

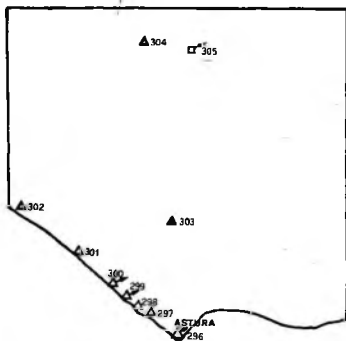


Fig. 204 - Idem. Astúrias, sitios rurales romanos (Andreussi, 1981, tav. XIX).

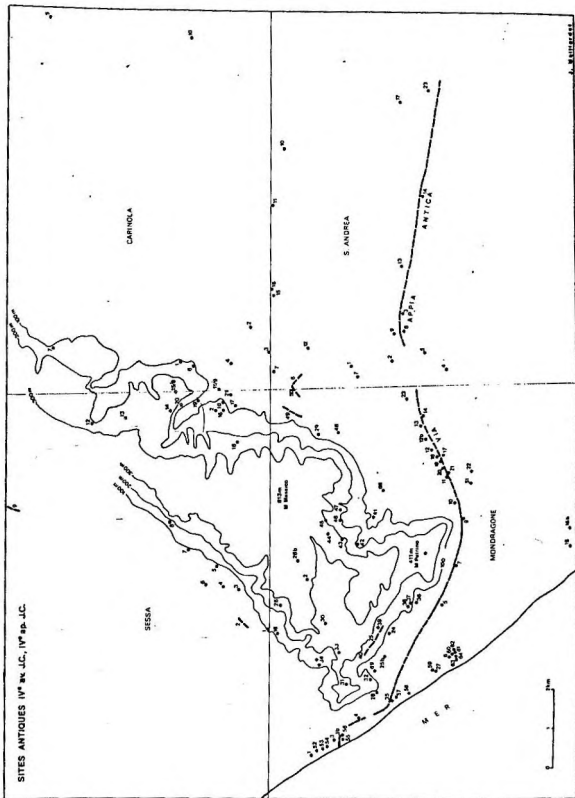
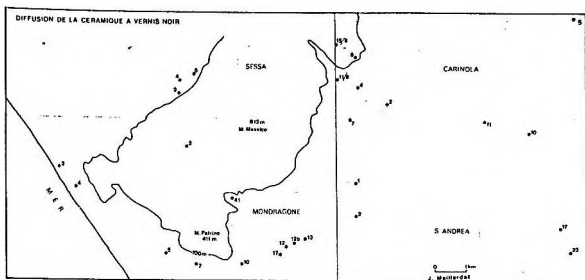
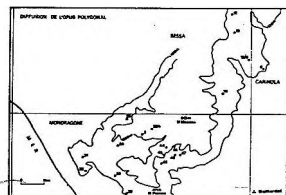


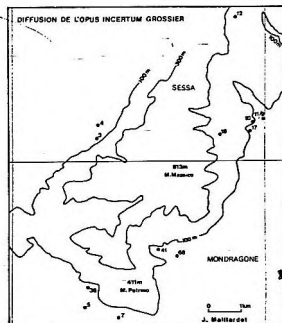
Fig. 205 - Campânia setentrional. Sítios rurais romanos ao redor do Monte Massico e no ager falernus (Vallat, 1987).



a



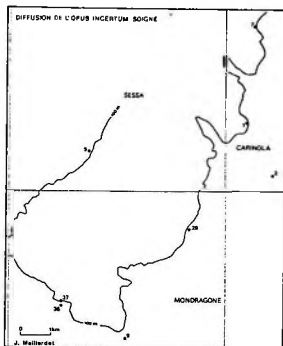
b



c

Fig. 206 - Idem. a) sitios com cerâmica de verniz negro; sitios com obra poligonal; c) sitios com obra incerta grosseira (Vallat, 1987, figs. 142, 143 e 148).





a

Fig. 207 - Idem. a) sítios com obra incerta de boa qualidade; b) sítios com obra reticulada, laterícia e mista (Vallat,1987, figs. 160-161).



b