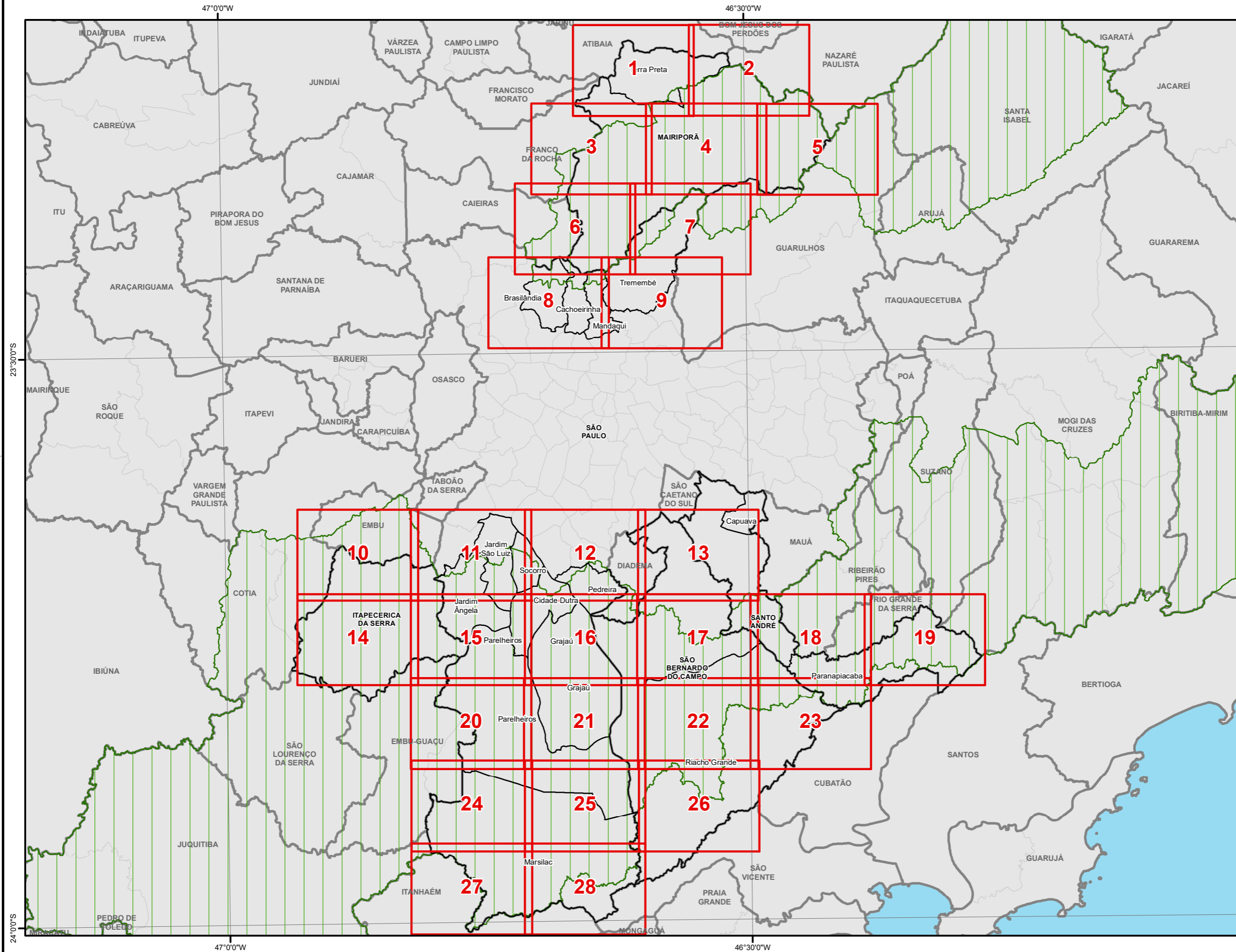




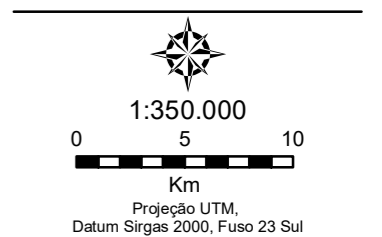


Setores Censitários 2010

Articulação das Cartas
1:35.000



-  Municípios
-  Limite Área de Proteção dos Mananciais
-  Área de Estudo
-  Articulação 1:35.000



Fonte:
IBGE - Limites de Municípios e Setores Censitários 2010
Emplasa, APRM
PMSP - Planos Regionais Estratégicos, 2004
EMPLASA/IGC - Mapa São Paulo 2010/2011 in
<http://datageo.ambiente.sp.gov.br/>
IBGE - Censo 2010 - Divisões Político-Administrativas

Elaboração: Regina Stela Néspoli
Geoprocessamento: Alexandre de Castro Santos Pinto