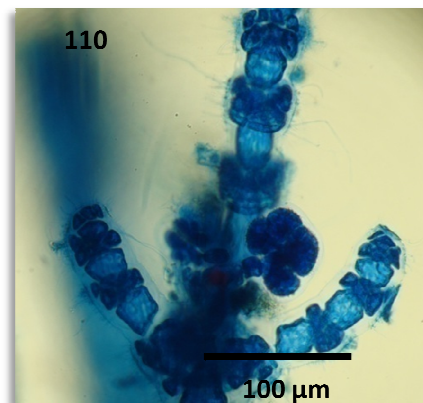
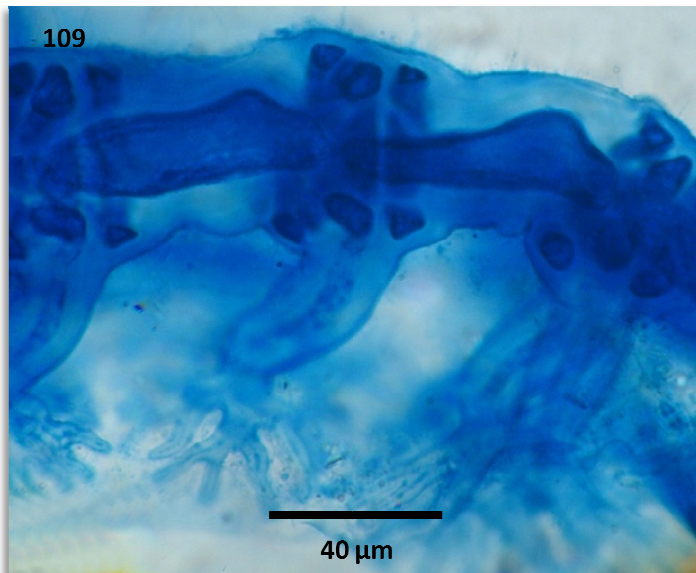
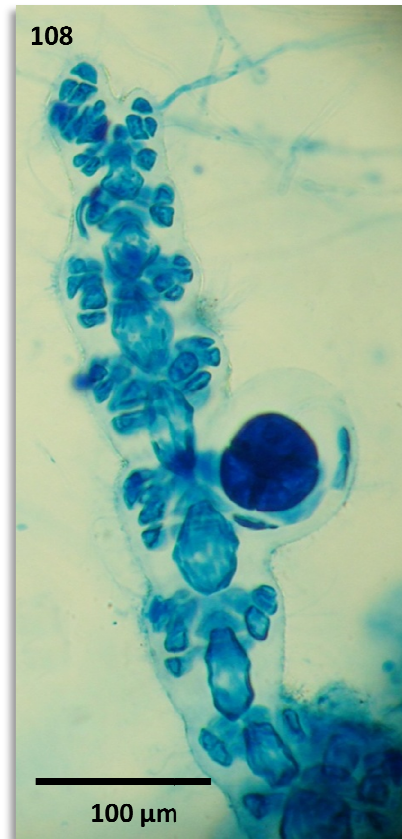
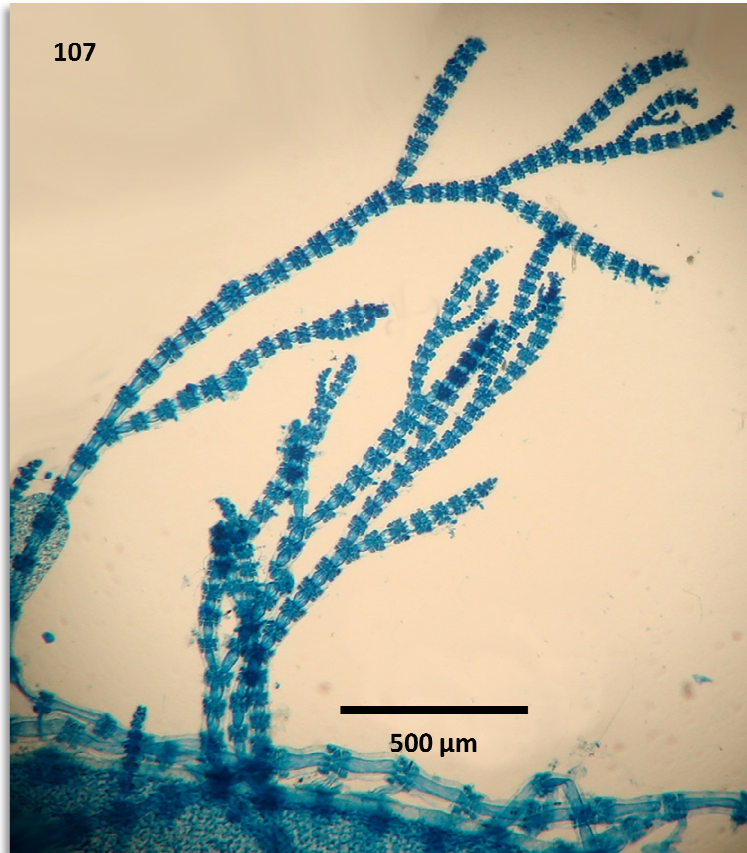
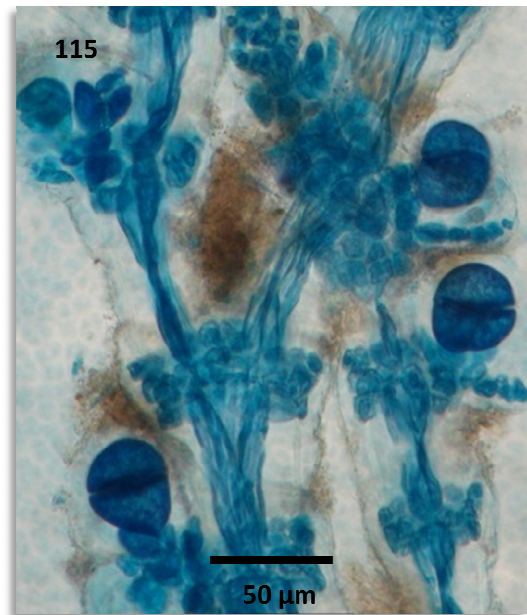
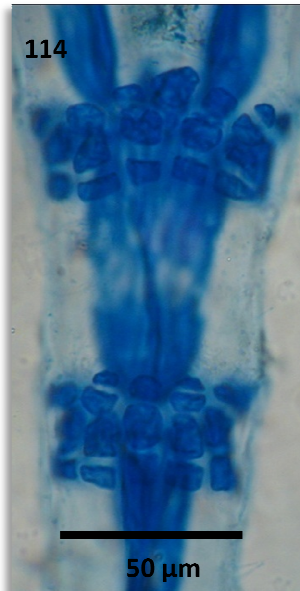
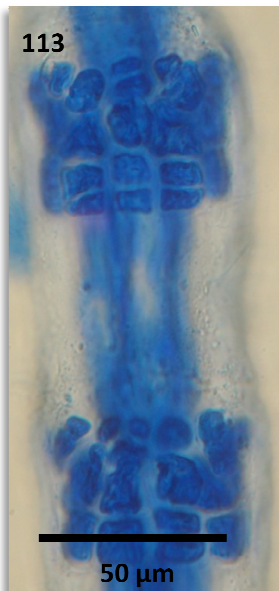
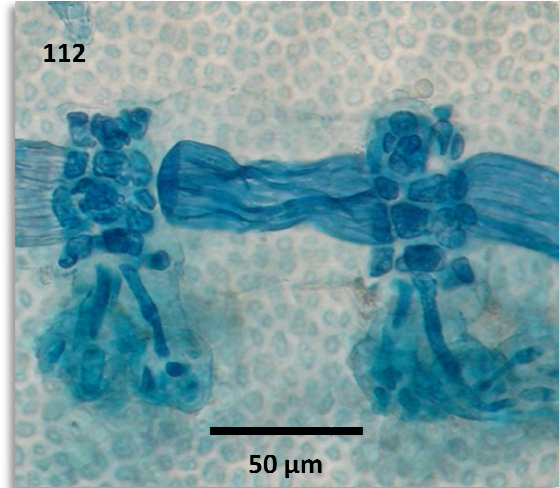
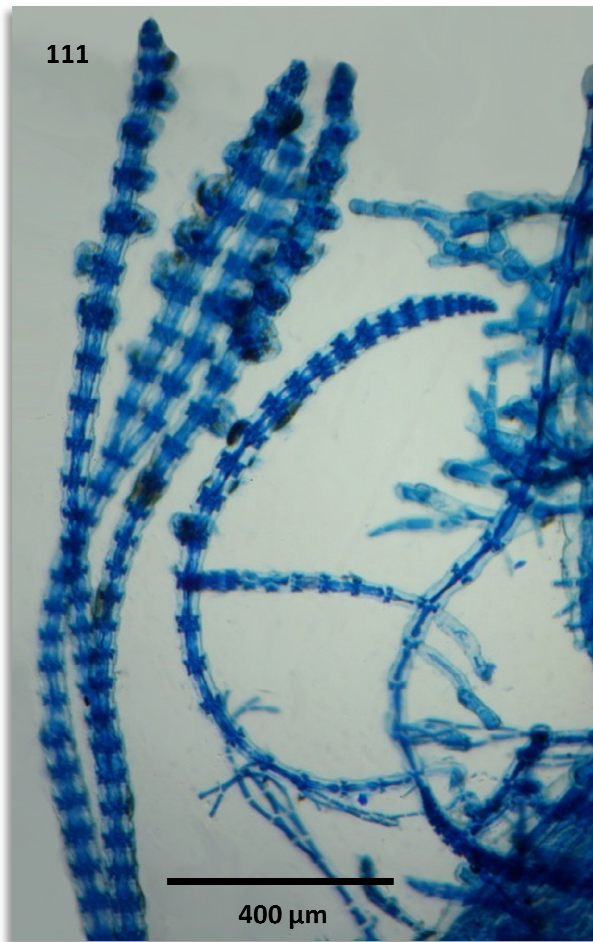


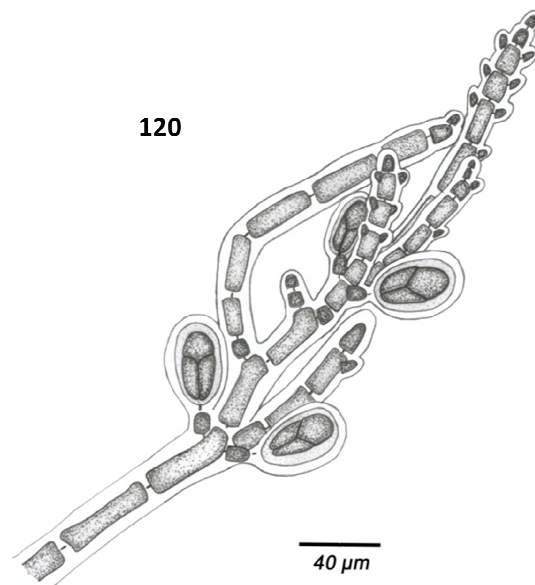
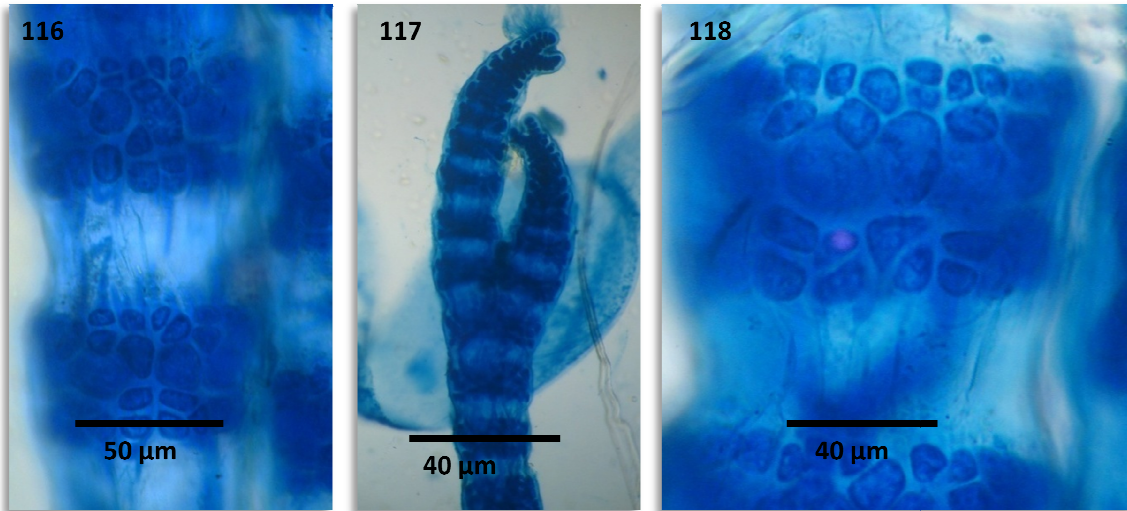
FIGURAS 104-106: *CERAMIUM CLARIONENSE*. 104 – ASPECTO GERAL DO TALO. 105 – DETALHE DE UM NÓ. 106 – DETALHE DE UM NÓ COM CÉLULAS GLANDULARES.



FIGURAS 107-110: *CERAMIUM DAWSONII*. 107 – ASPECTO GERAL DO TALO. 108 – TETRASPORÂNGIO COM CÉLULAS CORTICAIS DE PROTEÇÃO. 109 – RIZÓIDES UNICELULARES COM EXTREMIDADES DIGITIFORMES. 110 – CARPOSPORÂNGIO.



FIGURAS 111-115: *CERAMIUM* SP.1. 111 – ASPECTO GERAL DO TALO. 112 – RIZÓIDES MULTICELULARES COM EXTREMIDADES DIGITIFORMES. 113, 114 – DETALHE DOS NÓS. 115 – TETRASPORÂNGIO COM CÉLULAS CORTICAIS DE PROTEÇÃO.



FIGURAS 116-118: *CERAMIUM* SP.2. 116, 118 – DETALHE DOS NÓS. 117 – DETALHE DOS ÁPICES RECURVADOS. 119-120: *DOHRNIELLA ANTILLARA* VAR. *BRASILIENSIS*. 119 – DETALHE DAS PORÇÕES APICAIS DOS RAMOS. 120 – TALO TERASPOROFÍTICO.